

ISE EXPO

ICT SOLUTIONS & EDUCATION

2021

AUGUST 31 – SEPTEMBER 2
FORT WORTH, TEXAS



Education: August 31 – September 2

Exhibits: September 1 – September 2

Fort Worth Convention Center

Don't ignore yourself.
Invest in your professional future IRL.

www.iseexpo.com

#InvestIRL #ISEEXPO2021

Narada®

RELIABLE BATTERY SOLUTIONS

RESERVE POWER



HTB Series High Operating Temperatures - Thin Plate Pure Lead – TPPL (100Ah to 210Ah)

VRLA battery designed with high temperature resistant materials and a catalyst vent to maximize life in applications where nominal operating temperatures are 35°C.

CXL Series Extreme Long Life High Temperature – CATV (107Ah)

VRLA battery specifically design to meet environmental performance requirements of any broadband cable and outside plant application. Utilizing a high temperature resistant lead alloy, catalyst vent and optimized plate technology offering exceptional service life.

HELiON™ NPFC Series Lithium (10Ah to 200Ah)

Over a decade of proven performance, these Lithium (LFP) 48V nominal batteries offer exceptional cycle and service life with a compact size are 19" rack mountable and provide significant weight reductions over traditional VRLA batteries.

HELiON™ FEN Series Lithium (50Ah)

Suited for OSP, telecom 5G applications, this Lithium (LFP) 48V nominal battery is rated for temperatures up to 60C, IP65 environmental protection and designed to be mountable to poles, cabinets, and buildings.

FIND US AT THE SHOW!

MP Narada®

www.mpinarada.com | telecom@mpinarada.com | Newton, MA | 800-982-4339



SCAN ME

Contents

Welcome Letter	6
Schedule	51
Opening Keynote	52
Tech Talks	54
Advanced Workshops	59
Seminar Lineup at a Glance	60
Demo Zone	61
Exhibitor Directory	64
Outdoor IRL Networking Hour	96
Education Expert Drawing	96
Attendee Booth Tracker	96
Convention Center Floor Map	97
Exhibit Hall Floor Map	98
Thank You to Our Sponsors	100
ISE EXPO Mobile App	101
Post-Show Bonus Education	102

Schedule

TUESDAY, AUGUST 31

7:00 AM – 5:00 PM: Registration Open

8:00 AM – 4:30 PM: Workshops

WEDNESDAY, SEPTEMBER 1

7:00 AM – 6:00 PM: Registration Open

8:00 AM – 10:15 AM: Seminars

10:30 AM – 11:30 AM: Opening Keynote

11:30 AM – 6:00 PM: Exhibit Floor Open

6:00 PM – 7:00 PM: Outdoor IRL
(In Real Life) Networking Event

THURSDAY, SEPTEMBER 2

7:00 AM – 2:30 PM: Registration Open

8:00 AM – 9:00 AM: Demo Zone

8:00 AM – 10:15 AM: Seminars

10:30 AM – 11:30 AM: Tech Talks

11:30 AM – 3:00 PM: Exhibit Floor Open

2:45 PM: Prizes Awarded

ISE EXPO 2021 promises to be beyond compare in network evolution and innovation. Prepare yourself for the cutting-edge content that tech-savvy network operators need to ensure continual business viability with insights only presented at the show. ***Live and in person.***

BENEFITS OF ATTENDING

ISE EXPO 2021 Full Registration (\$700 value) includes access to:

- Seminars on Wednesday, September 1, and Thursday, September 2.
- Opening Keynote with Genia Wilbourn, Senior Vice President, Verizon Global Network Operations & Assurance, and Abby Knowles, Vice President, Verizon Global Network & Technology (GN&T)
- Tech Talks with presenters from Alliance Communications, AT&T and Comcast
- Exhibit Floor
- Lunch on Wednesday, September 1, and Thursday, September 2
- Outdoor IRL Networking Event
- 10 BICSI CECs
- ETA accredited seminars
- BONUS post-show on-demand educational seminars

FEES

\$550.00	Pre-Registration Attendee Conference Pass	Valid until August 31
----------	---	-----------------------

\$700.00	On-site Attendee Conference Pass Pricing at Fort Worth Convention Center	September 1 – 2
----------	--	-----------------

\$150.00	Discounted rate for advanced workshop attendees. Must sign up for paid workshops on August 31 (see page 68) to receive this discounted price for the Attendee Conference Pass.
----------	--

\$150.00	Spouse add-on with purchase of Attendee Conference Pass
----------	---

All requests for refunds must be received in writing by August 2, 2021 for a full refund.
All registrations after August 2, 2021 are NON-REFUNDABLE.

Opening Keynote

September 1, 2021

10:30 AM BALLROOM

SPONSORED BY:



Reserve your IRL seat to learn how network transformation and cultural transformation intersect for today's engineering teams.

ISE magazine is proud to host **Genia Wilbourn**, Senior Vice President, Verizon Global Network Operations & Assurance, and **Abby Knowles**, Vice President, Verizon Global Network & Technology (GN&T), to present the 2021 Opening Keynote Address.

ISE EXPO 2021 knows diversity and inclusion are critical to transforming the telecom industry. Facts prove why. Recently, Forbes reported research, from both the Harvard Business Journal and Credit Suisse Research Institute, shows that "diverse companies enjoyed better overall financial performance. EBIT margins for companies with diverse management teams were nearly 10% higher than for companies with below-average management diversity."

The article also stated, "Companies with above-average diversity produced a greater proportion of revenue from innovation (45% of total) than from companies with below-average diversity (26%). This 19% innovation-related advantage translated into overall better financial performance."

The research proves what the leadership team at ISE magazine and ISE EXPO knows. *"We are committed to educating the telecom/ICT industry about best practices related to transforming the wireline and wireless networks. ISE magazine will also be sharing providers' DEI journeys in future issues,"* says Janice Oliva, President of PCI, the parent company of ISE magazine and ISE EXPO.



verizon

Genia Wilbourn

Senior Vice President

Verizon Global Network Operations & Assurance

Genia Wilbourn is Senior Vice President of Verizon's Global Network Operations & Assurance, leading network field operations for the nation's largest and most reliable 5G and 4G LTE wireless network. This network, along with the state-of-the-art wireline OneFiber and Intelligent Edge Networks, delivers the broadband connectivity that consumer and business customers rely on domestically and globally. Additionally, she leads Verizon's business service delivery & assurance in more than 39 countries.

Ms. Wilbourn previously led Verizon Partner Solutions Operations, responsible for Verizon's global wireline wholesale operations. Prior to that role, she led Global Engineering Design & Transport where she was responsible for engineering design, network provisioning and capacity management across Verizon's wireline footprint. Ms. Wilbourn began her Verizon career in 1998 as a wholesale operations team leader and has since held a variety of positions of increasing responsibility in network operations, service delivery & assurance and customer care.

Ms. Wilbourn holds a Bachelor's of Science degree in Civil Engineering from Morgan State University. She is a graduate of the Master Series of Distinguished Leaders and has been named one of ISE magazine's Game Changers.

Ms. Wilbourn acts as Executive Sponsor of Verizon's Black Originators Leaders and Doers (BOLD) and Global Network & Technology's Moment to Movement programs, both focused on ensuring racial equality. She actively supports Verizon Foundation's Innovative Learning mentoring programs such as Black Girls Code and #weneedmore, which seek to foster and inspire youth towards STEM (Science, Technology, Engineering & Math) careers. She serves on the Advisory Board for the Women in Technology Summit and is a member of World 50, a private community for CEOs and C-level executives at global respected organizations to discover better ideas, share valuable experiences, and build relationships that make a lasting impact.



verizon✓

Abby Knowles

Vice President, Verizon Global Network & Technology (GN&T)

Abby Knowles is a Vice President in the Verizon Global Network and Technology (GN&T) organization, responsible for the operations of the wireless network in the US territory west of the Mississippi River. Her team is responsible for ensuring that the award-winning Verizon network maintains its number one reliability ranking and is always available to its customers.

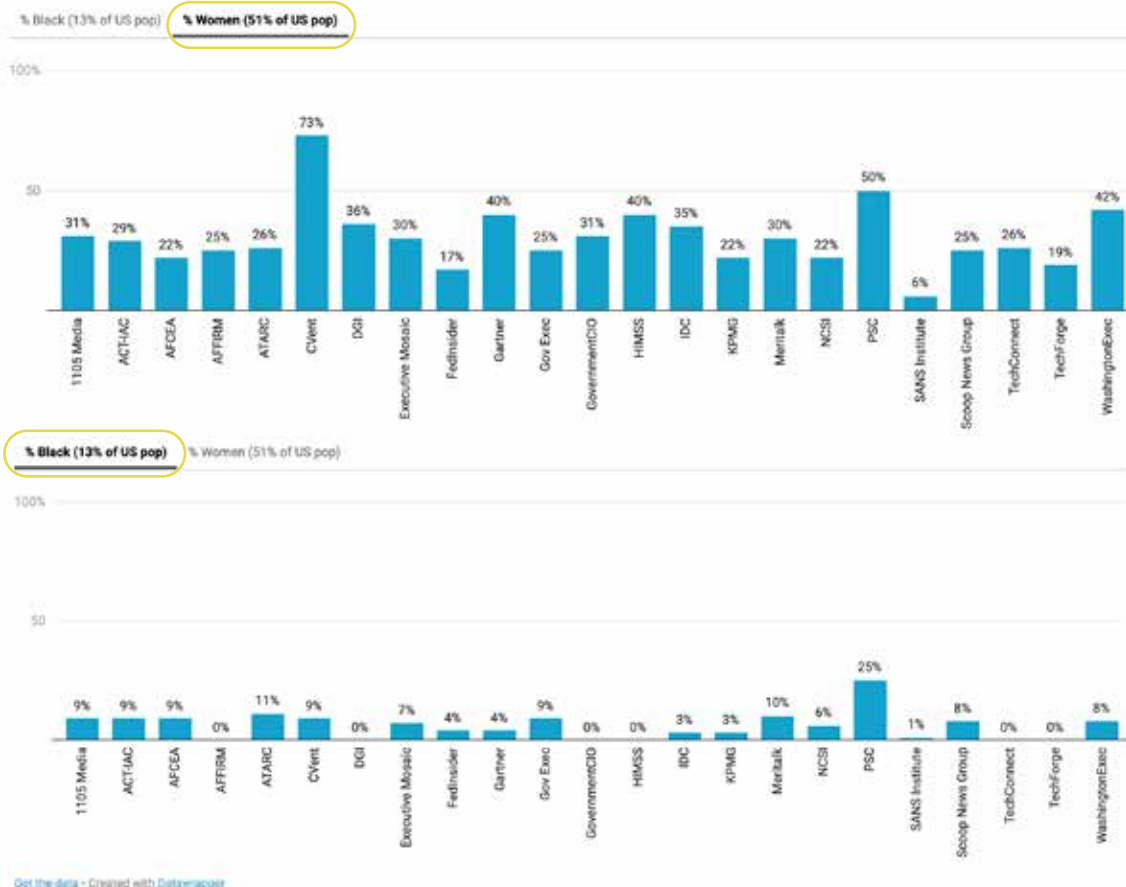
She has almost 25 years of experience in the Information & Communications Technology (ICT) industry working for Verizon in various roles as an engineer and leader. Abby is currently leading her team through transformation by experimenting with self disruption, embracing innovation and upskilling for rapidly evolving technologies such as Software Defined Networks (SDN), Artificial Intelligence (AI) and Machine Learning (ML). Her team is also heavily involved in Verizon's 5G and Mobile Edge Compute (MEC) deployments.

Abby graduated from HBCU Morgan State University with a BSc. degree in Electrical Engineering, and has an MSc. in Information and Telecom Systems for Business from Johns Hopkins, as well as a Masters Certificate in Project Management from George Washington University. She is passionate about STEM advancement for minorities, and loves track & field, reading and traveling.

Abby was born in Kingston, Jamaica and grew up in a military family on the military base there. She is married with 2 daughters and now lives with her family in Dallas, Texas.

Inclusiveness by Conference Company

The U.S. population is 51% women and 13% Black.



Sources: www.forbes.com/sites/forbesinsights/2020/01/15/diversity+confirmed-to-boost-innovation-and-financial-results/?sh=641b694a4a61,
www.washingtontechnology.com/blogs/editors-notebook/2021/02/tech-inclusion-tracker.aspx, www.trackinclusion.org,
www.reviewjournal.com/business/conventions/ces/ces-makes-strides-with-number-of-women-keynotes-224812/

Tech Talks

September 2, 2021

10:30 AM BALLROOM

Now in its 5th year, Tech Talks will once again offer a variety of network topics from several different industry experts.

Each speaker will showcase their critical insight on an important topic that is top of mind for everyone in the network transformation game. You will be engaged and inspired to innovate around the issue they raise. Our team of Tech Talk presenters includes network visionaries passionate about delivering solutions around the pain points you face with your wireless, mobile and wireline networks.



Ross Petrick
General Manager/CEO

Ross started in the Telecommunications industry in 1999. He has worked for municipal, and cooperative-owned telecommunications companies around South Dakota including Swiftel Communications and Golden West Telecommunications. For 12 years, he worked, and was a shareholder, at Vantage Point Solutions. He's had positions ranging from engineering, product development and regulatory consulting for clients across the US, and currently sits on the board for SDN Communications. Ross grew up in a small town in SD, graduated with a BS in Economics from South Dakota State University and lives in Garretson, SD, with his wife, Katie, and 2 children.



Tejas Antani
Vice President, Consumer Field Operations, Southwest Region
AT&T Customer Advocacy & Service

Tejas leads over 6,000 technicians and managers that install, repair, and maintain services for over 4M AT&T customers in Arkansas, Kansas, Missouri, Oklahoma, and Texas. In his 18-year tenure with AT&T, Tejas has served in a variety of leadership roles across customer-facing operations in contact centers and field services as well as roles in technology design and development and big data analytics. He is a graduate of the University of California, Berkeley, where he studied Cognitive Science. A native of Southern California, Tejas and his wife currently reside in Dallas with their 2 young girls.



Trent Clausen
Vice President of Technical Operations

Trent joined the Comcast team in August 2018. He is responsible for over 400 individuals who complete Comcast customer installations and repairs in the Twin Cities Region, which includes MN, WI, KS and MO. His career in the telecommunications industry started more than 20 years ago as a Supervisor in Repair Screening with US West. Prior to joining US West, Trent spent 7 years in the U.S. Army where he earned the rank of Captain. He holds a bachelor's degree in aeronautical studies from the University of North Dakota and an MBA from the Carlson School of Management at the University of Minnesota. Trent and his wife, Carrie, reside in Elk River.

More 5G Power in Less Space.

Vertiv™ NetSure™ 7100

Retrofit existing spaces with higher density power.



When you are scaling your sites for 5G, space is at a premium. Just because you need more power on site, doesn't mean you have more room to store it.

The outdoor Vertiv™ NetSure™ 7100 DC power system delivers more capacity in a compact footprint that fits into existing racks or enclosures in your network.

Upgrade your network now. Get Vertiv™ NetSure™ 7100!

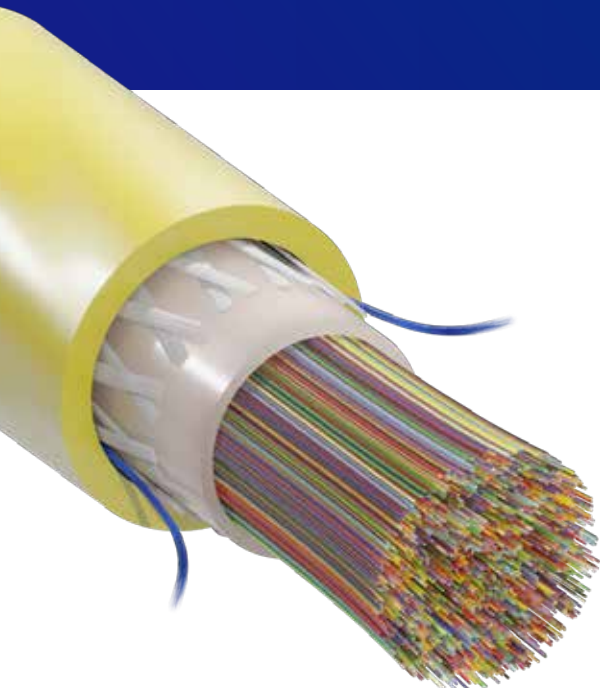
Scale With Confidence.

[Vertiv.com/5G](https://www.vertiv.com/5G)



PLIABLE RIBBON ALLOWS FOR LESS SPACE WITH MORE FIBER

HOW PLIABLE RIBBON TECHNOLOGY IS
CHANGING THE FIBER OPTIC CABLE LANDSCAPE



WHAT IS PLIABLE FIBER OPTIC RIBBON?

Pliable ribbon cable designs fill central tube cables with more fiber than ever before. The pliable structure has no preferential bend, therefore allowing the fibers to collapse on top of one another while still attached in ribbon form. This feature allows the circular central tube of a cable to be completely occupied with fiber rather than having space left empty by using a rectangular or square stack of traditional flat ribbons. There are also pliable ribbon cable designs that utilize 200um-sized fiber to make design even more densely packed, space-saving cables for today's ever-increasing demand for more bandwidth.

TERMINATING RIBBON-BASED CABLES

Ribbon-based cable constructions offer multiple advantages over loose tube and tight buffer cable constructions in the area of fiber termination. The process for splicing the fiber is the same – Strip, Clean, Cleaver, Splice, and Protect. The only change is using a heated jacket remover for removing the ribbon matrix.

144 Single splicers at 120 splices per second would take an experienced splicing technician around 288 minutes (4.8 hours); however, splicing 144 fibers in a 12-count ribbon construction will yield a splice time of only 24 minutes. Splicing 12ct ribbon would be 92% more efficient than splicing single fiber!

MPO Splice-On Connectors are field installable connectors designed for customized, on-site terminations with ribbon cabling. Logistical delays associated with pre-engineered cables are eliminated because of the flexibility of determining exact cable lengths and easy terminations on the work site.



SUMITOMO ELECTRIC
LIGHTWAVE

FREEFORM RIBBON® TECHNOLOGY

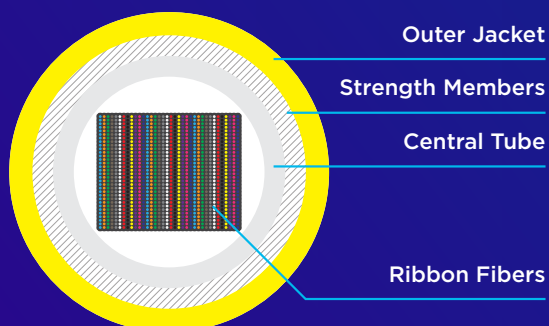
DESCRIPTION

Sumitomo Electric Lightwave's Freeform Ribbon® allows for dense fiber packing and a small cable diameter with a non-preferential bend axis thereby increasing density in space-constrained applications. Sumitomo Electric's patented pliable Freeform Ribbon® construction is designed to both pack densely in small form factor cables while still being capable to transform quickly, without any tools, to splice-ready form similar to standard/flat ribbon for fast and easy 12ct ribbon

splicing (for both in-line and fusion splice-on connector splicing applications). Whether installing high fiber count cables, such as 1728, 3456 and higher to fit into existing 1.5" or 2" ducts, or needing to work with smaller and easy to terminate interconnect cables, the Freeform Ribbon® is the central component to achieve both.

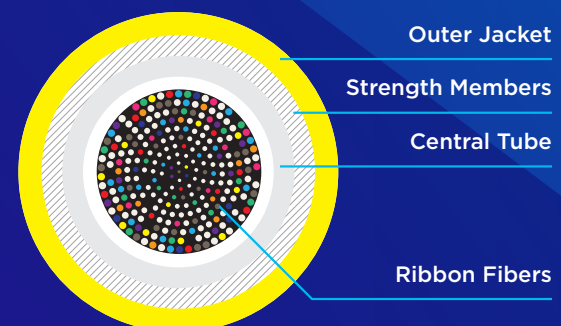
For more information visit
SumitomoElectricLightwave.com

864F STANDARD FLAT RIBBON



Standard Ribbon Design

1728F FREEFORM RIBBON®



Freeform Ribbon® Design

Double the Fiber, Same Outside Diameter

Education

For the complete seminar lineup and descriptions, visit www.iseexpo.com/schedule-of-events or download the mobile app.

Track 1: Construction & Engineering/Network Transformation/Networks as a Service (NaaS)/CapEx & OpEx Optimization

Attendees will learn to transform the wireless/wireline networks with innovative solutions that improve customers' QoE while creating operational efficiencies for Communications Service Providers' (CSPs) financial health.

Track 2: Access Networks Evolution/OSP Advances/Network Visibility/FTTx/Wi-Fi

Attendees will learn advanced solutions to leverage the copper/fiber/hybrid networks. These advancements in operational processes/techniques/tools and solutions will help increase bandwidth, reduce latency and improve end-users' experiences in their home and office.

Track 3: 5G-6G Infrastructure/FWA/Small Cells/RAN Progression

Attendees will learn the latest advances to help 5G mass-market rollout pace and cost structure. From cell densification to Fixed Wireless Access (FWA) and network slicing, attendees will be better prepared for 5G and 6G network realities they face.

Track 4: Network Monitoring & Reliability/Powering/GIS/Cybersecurity/Safety

Attendees will learn new technologies related to network monitoring & optimization; GIS; hybrid power; emergency response; COVID-19 impact; cybersecurity; sustainability; and more to optimize and secure the wireline and wireless networks.



Earn CECs Toward Your Professional Certification

Our top-quality seminars are approved to award CECs.

For more information, visit www.iseexpo.com/cecs.

Earn 10 BICSI CECs When You Attend in Fort Worth

The ISE team is passionate about delivering professional development that advances your career. Toward that end, ISE EXPO 2021 is recognized as a BICSI CEC provider. Attendees and exhibitors will earn **10 BICSI Continuing Education Credits*** (CECs) when they attend ISE EXPO 2021 in Fort Worth, Texas.



*These BICSI CECs are issued ONLY to BICSI credential holders. To obtain their credits, attendees will be able to log into the ISE EXPO Attendee Resource Center (ARC) using their first name, last name, and Badge ID (this number will appear on the badge and on any registration confirmations) to view/print their certificate. Attendees will be able to access the ARC website up to 2 - 3 months after the event to print their BICSI certificate.

**REGISTER BEFORE
AUGUST 31 TO SAVE ON
REGISTRATION FEES!**

WWW.ISEEXPO.COM

Advanced Workshops

Get the most out of ISE EXPO 2021 with a seat in our advanced education workshops on **Tuesday, August 31**. Learn from industry experts and explore the latest education innovations. Don't wait to register to receive a **discounted attendee conference pass** (see page 51). These workshops fill up fast!

5G Technician: An Introduction to 5G



8:00 AM – 3:30 PM Workshop

3:45 PM – 5:45 PM ETA Certification Exam – *Optional*

**Presented by Patrick McNerney, Chief Operating Officer,
3D Design and Engineering**

Cost – Workshop Only \$400; ETA Exam \$105

ETA - 8 CECS

ROOM 103A

Prepare yourself for the next wave of work for the telecommunications industry with "5G Technician: An Introduction to 5G". Learn the differences between 1G through 5G, the history that got us to this point, and the key technology enablers of 5G. Also, unique to this course is the 5G Build-Out section covering the practical design applications of 5G Build-Outs of Ultra-Dense Networks.

Introduction to Project Management



8:30 AM – 11:30 AM

**Presented by Deb Schaffer, PMP,
AdvantEdge Training and Consulting**

Cost \$200

ROOM 103B

In the "Introduction to Project Management" session, attendees learn how to define a project, including the project life cycle, creating a plan and managing constraints. We'll use a case study to broaden the understanding of the underlying concepts.

FTTx Outside Plant Design Short Course



9:00 AM – 12:00 PM

Presented by Danny Huffman, Instructor, Light Brigade

Cost \$200

ETA - 3 CECS

ROOM 102

This session will focus on the proper design of FTTx point-to-point and point-to-multipoint passive optical networks (PON) with home run, centralized, and distributed topologies. Learn about the importance of customer take rate and density and how they apply to your design. The session will review various network configurations, design benchmarks, and installation parameters for FTTx systems.

Keeping it Together: What Project Documents Do I Really Need?



12:30 PM – 4:30 PM

**Presented by Deb Schaffer, PMP,
AdvantEdge Training and Consulting**

Cost \$250

ROOM 103B

In "Keeping it Together: What Project Documents Do I Really Need?", attendees learn what documents are necessary and which are optional when running a project -- and how to determine that based on your organization. We'll practice writing some statements and provide a few document templates to help you get started.

CORNING

Thank you to Corning for being our **Exclusive Education Sponsor** for seminars and advanced workshops!

Seminar Lineup

For the complete seminar lineup and descriptions, visit www.iseexpo.com/schedule-of-events.

Wednesday, September 1

All regular seminars are open to registered attendees and exhibitors

8:00 AM – 9:00 AM

9:15 AM – 10:15 AM

TRACK 1

Knocking Down the Silos to Automate Construction Drops

Panel Discussion Moderated by Vitruvi

ETA 1-CEC

ROOM 202A

How to Join the Real-Time Revolution: Transformation of the Physical Network

Presented by 3-GIS

INTERMEDIATE ETA 1-CEC

ROOM 202B

Shovel Readiness: The Key to Optimizing Your Funding and Accelerating Your Build

Presented by Corning

INTERMEDIATE ETA 1-CEC

ROOM 202A

Using Digital Construction to Reduce Cycle Time and Automate Material Management

Presented by Even Group

BASIC ETA 1-CEC

ROOM 202B

TRACK 2

The Great Migration: Utilizing Plug-and-Play to Upgrade and Deploy Wireless Technologies

Presented by Clearfield

BASIC ETA 1-CEC

ROOM 203A

Value of Micro Cabling Systems vs. Traditional Fiber Optic Cabling Systems for Access Networks

Presented by Hexatronic North America

INTERMEDIATE ETA 1-CEC

ROOM 202C

Delivering Network Efficiency in the Access Layer

Presented by CommScope

BASIC ETA 1-CEC

ROOM 203A

Understanding Different FTTH Design Architectures

Presented by Vantage Point Solutions

BASIC ETA 1-CEC

ROOM 203B

TRACK 3

Lighting Up 5G – The Future-Ready Access Network

Presented by AFL

BASIC ETA 1-CEC

ROOM 203B

Fixed Wireless to Fiber Business Plan – How Operators are Leveraging FWA and FTTP Together to Win in Their Markets

Presented by Calix

INTERMEDIATE ETA 1-CEC

ROOM 204A

5G Small Cells

Presented by EnerSys Energy Systems

INTERMEDIATE ETA 1-CEC

ROOM 204A

TRACK 4

Bogons, Martians and Other Boogeymen

Presented by City of Fort Collins Connexion

BASIC ETA 1-CEC

ROOM 204B

Sustainability as a Business Case

Presented by Plug Power

BASIC ETA 1-CEC

ROOM 202C

New Technology for Making Fiber Optic Facilities Locatable Without Using Tracer Wire

Presented by 3M

BASIC ETA 1-CEC

ROOM 204B

Thursday, September 2

All regular seminars are open to registered attendees and exhibitors

8:00 AM – 9:00 AM



CORNING

Thank you to Corning
for being our **Exclusive
Education Sponsor**
for seminars and
advanced workshops!

9:15 AM – 10:15 AM

Municipal Broadband – Preparing to Deliver Broadband Services in the Municipality

Presented by Osmose Utilities Services, Inc.

INTERMEDIATE ETA 1-CEC

ROOM 202A

Utility Innovation in Network Deployment: The Vermont Case Study

Panel Discussion Moderated by

Tilson Technology Management, Inc. ETA 1-CEC RM 202B

If it's Not Fiber, it's Not Broadband

Presented by Fiber Broadband Association

INTERMEDIATE

ROOM 202A

Operational Practices for Wi-Fi Deployment

Presented by SCTE-ISBE

INTERMEDIATE ETA 1-CEC

ROOM 202B

Extending Rural Fiber or Fixed Wireless Gigabit Services: Over Existing Telephone Pairs or Coax Cable

Presented by Positron Access Solutions

INTERMEDIATE ETA 1-CEC

ROOM 203A

Building Trust in Edge Data Centers for 5G

Panel Discussion Moderated by

Telecommunications Industry Association

ETA 1-CEC

ROOM 203A

Enhancing Cellular Network Uptime Through Power Boost Conversion

Presented by Vertiv

INTERMEDIATE ETA 1-CEC

ROOM 203B

Placing and Protecting Edge Compute Infrastructure Outdoors

Presented by Charles Industries, LLC

BASIC ETA 1-CEC

ROOM 202C

Demo Zone

MUST REGISTER TO ATTEND

LOCATION: BALLROOM

8:00 AM – 9:00 AM

Register to attend the Demo Zone where you can
see firsthand the latest and greatest innovations
from these leading ICT companies:



Practical Lightning Mitigation

Presented by Solara Technical Sales

BASIC ETA 1-CEC

ROOM 204A

Power and Surge Protection for Reliable Remote Network Deployments

Presented by SETfuse and Ericsson, representing

ATIS Protection Engineers Group

BASIC ETA 1-CEC

ROOM 204B

VENDOR Q&A



Q&A with Dan Levac

National Sales Manager, Communications Markets
Preformed Line Products (PLP)

ISE: Tell us a little about PLP's approach to product design.

DL: At PLP, we listen to our customers. We know that our solutions are trusted by energy and communications providers to protect critical connections, so we work hard to ensure that they exceed expectations. Delivering precision-engineered products begins in the early design phases as we work along-side customers to create products with the features they need most. Our designs are then manufactured with quality materials and backed by our dedicated technical support and customer service teams.

ISE: How does the technician installing the product fit into the design process?

DL: Properly installing products is key to their long-term performance, so we make a great effort to ensure that our closures are easy for field technicians and splicers to work with. Technicians can easily add cables because we've designed a seamless re-entry system (through our segmented end plate) that allows independent access to ports, meaning modifications can be made without disrupting any surrounding cables. In addition, our trays can be removed from the stack, and also hinged in some closures, to allow multiple splicers to work simultaneously. And, no special tools are required with our closures; a can wrench is all you usually need.

ISE: In what ways does PLP help customers accommodate future network growth?

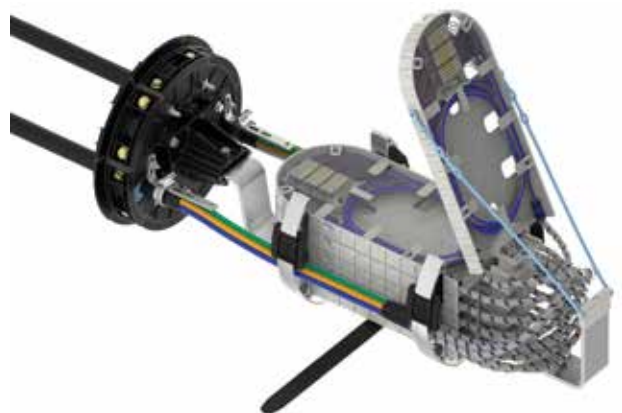
DL: Helping customers future-proof their networks is a top concern for us, so we have created several ways for customers to continue to grow their network without having to change out equipment. One way PLP has done this is by creating universal accessories, like trays and grommets. We offer interchangeable trays in low and deep profile options that can accommodate single and mass fusion or splitter applications. And, our grommets are universal across all COYOTE® dome closures, which helps our customers save on installation time and product costs when cable changes are necessary.

ISE: How is PLP helping underserved and rural communities deploy more cost-effective solutions?

DL: We understand that not every project needs a high-fiber-count closure, so we offer a full range of sizes to accommodate customers' needs. In addition, PLP closures can be deployed in many different applications (buried, below grade, aerial, and pole mount) and configurations (in-line or butt). One of our best-selling closures, the COYOTE 6.5 x 22, is popular with customers because it's small enough to fit in your standard handhole, but it is big enough to scale-up as network needs grow.

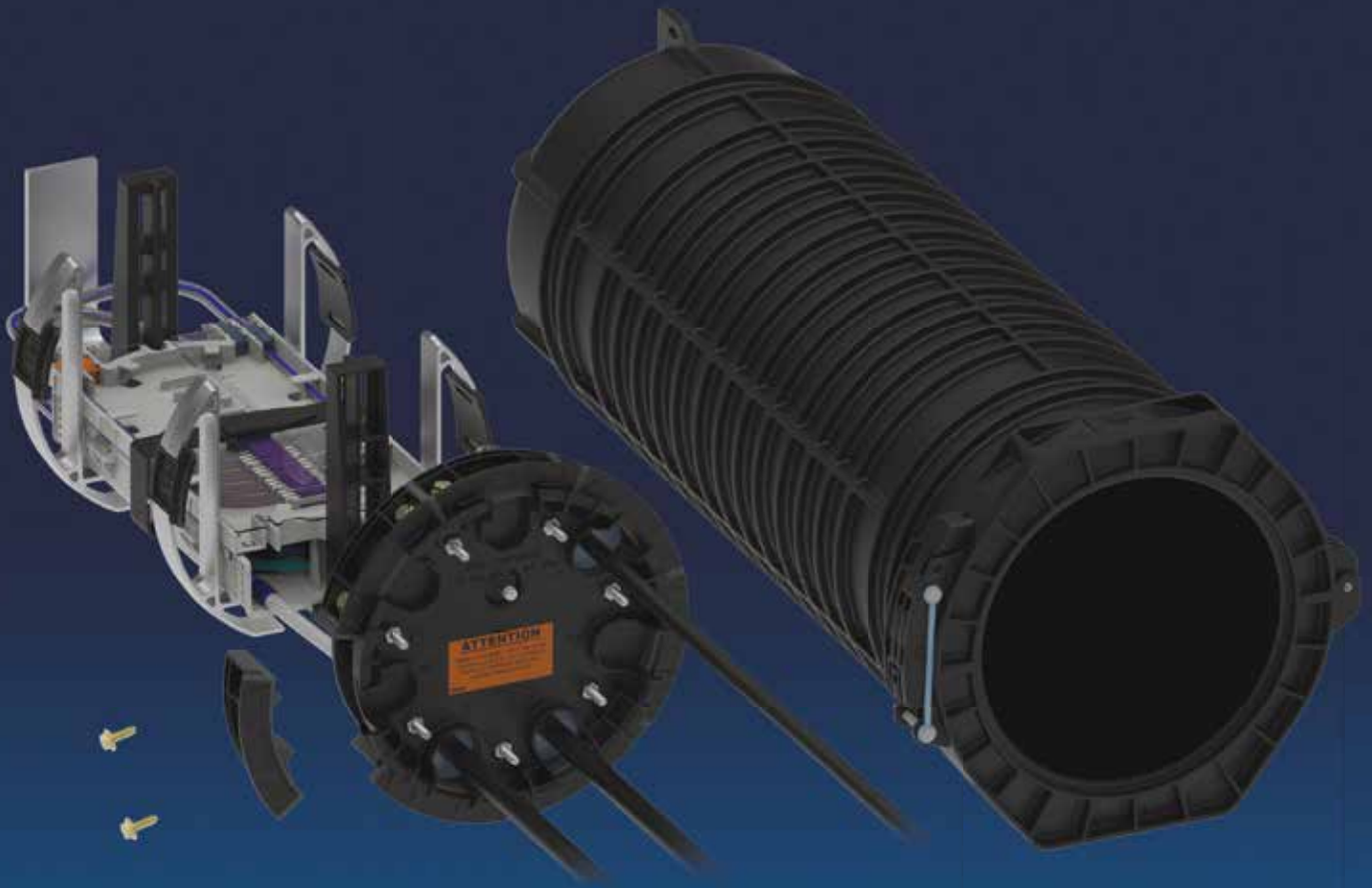
ISE: Where can splicers and other technicians learn more about your products' installation features?

DL: PLP offers complimentary in-person and virtual training, but we also have educational resources available on various social media platforms, including LinkedIn and Facebook. Our new Fiber Tips & Tricks video series has become popular with technicians. These short videos provide helpful industry insights and product installation tips for telecommunications professionals.



PLP's COYOTE® HD Dome Closure

For more information, visit preformed.com.



COYOTE[®] DOME CLOSURES

FEATURING PLP'S PATENTED
SEGMENTED END PLATE DESIGN

Ease of Installation • Adapts with Network Growth • Multiple Sizes Available



preformed.com

Exhibitor Directory

WEDNESDAY, SEPTEMBER 1

11:30 AM – 6:00 PM: Exhibit Floor Open

THURSDAY, SEPTEMBER 2

11:30 AM – 3:00 PM: Exhibit Floor Open

New products, services and solutions will create value for all professionals who design, build, operate, and maintain these networks.

Here are some wireline and wireless products/solutions showcasing at ISE EXPO 2021: C&E/Planning; Core/Legacy; FTTx; 5G Networks; IoT; Network Automation; Power/Sustainability; Safety/Network Security; Testing; GIS; Municipal Broadband and more.



3-GIS

BOOTH 227

350 Market St, Ste C, Decatur, AL 35601

Tel: 256.560.0744

Web: 3-GIS.com

CATEGORIES: LEGACY/COPPER, MAPPING/GIS, POWER/SUSTAINABILITY

3-GIS delivers Network Solutions that accelerate the deployment of fiber networks and 4G/5G enablement. Our cloud-based software gives you the solutions needed to manage your evolving network infrastructure from planning to management. Our simple and smart approach to fiber management means that your work processes can keep your network information accurate and up-to-date over time, so you can count on it.



A-Aerial Service Company, Inc.

BOOTH 401

3462 Webster Ave, Perris, CA 92571

Tel: 951.780.7853

Web: linemen-tools.com

CATEGORIES: FTTx, SAFETY, WIRELESS/5G

A-Aerial supplies a wide spectrum of items for the Underground and Aerial Communications Construction industry, which includes tools and materials. We take the extra effort to ensure that we keep the most common items in stock.

Acme Staple Company, Inc.

BOOTH 546

87 Hill Rd, Franklin, NH 03235

Tel: 603.934.2320

Web: acmestaple.com

CATEGORIES: FTTx, I&M, LEGACY/COPPER

Fast, simple, and cost-effective fastening systems for securing all building communications cabling -- including broadband and fiber optic -- according to the cable/wire manufacturers' installation requirements.

ADB Companies

BOOTH 201

18777 US Hwy 66, Pacific, MO 63069

Tel: 314.426.5200

Web: adbcompanies.com

CATEGORIES: FTTx, MAPPING/GIS, POWER/SUSTAINABILITY, WIRELESS/5G

ADB Companies, along with ZeroDay Technology Solutions and Mercury Communications, provide turnkey, end-to-end solutions for the communication, utility, and technology industries. ADB services commercial clients, service providers, and local, state, and federal government organizations on a national basis.



AFL

BOOTH 521

170 Ridgeview Center Dr,

Duncan, SC 29334

Tel: 864.433.0333

Web: aflglobal.com

CATEGORIES: C&E, FTTx, I&M, MISC., TESTING, WIRELESS/5G

AFL, an international manufacturer of fiber optic cable, outside/inside plant connectivity and accessories, is highlighting its Converged Access Network solution which includes its newest products-the Apex™ splice closure, TITAN® RTD Multiport Terminal with TRIDENT® Hardened Connector, Wrapping Tube Cable with SpiderWeb Ribbon®, plus fusion splicers and test equipment.



Allegis Corporation

BOOTH 543

8001 Central Ave NE,

Minneapolis, MN 55432

Tel: 866.378.7550

Web: allegiscorp.com

CATEGORIES: C&E, I&M, MISC.

Allegis Corporation is a premier supplier of

access components including handles, hinges, latches, sealing profiles, and gas springs. With thousands of stocked items and custom design capabilities, we offer expertise in product selection and engineering to help make your products better and reduce overall costs. Established in 1969, we stand by our original values of integrity, service, growth, and excellence.

American Polywater Corporation

BOOTH 528

11222 60th St North, Stillwater, MN 55082

Tel: 800.328.9384

Web: polywater.com

CATEGORIES: C&E, FTTX, I&M

A chemical solutions company that manufactures duct and pedestal sealants, cable prep cleaners, and cable pulling & blowing lubricants for the telecom/data/CATV markets. Products: duct sealants, barriers for rodent mitigation in cabinets and enclosures, cable pulling lubricants, cable cleaners - icky-pic & flooding compound remover, fiber optic glass cleaners, antifreeze gel system to protect cables from ice damage, micro-jetting and blowing lubricants, HDPE conduit adhesive, and air-pressurized cable repair kits.

American Products, LLC

BOOTH 627

597 Evergreen Rd, Strafford, MO 65757

Tel: 855.736.2135

Web: amprod.us

CATEGORIES: FTTX, WIRELESS/5G

American Products specializes in offering high quality, competitive enclosure and shelter solutions for protecting sensitive equipment in the field. The enclosures are designed and produced in our factory centrally located in the United States. We provide solutions for environmentally controlled cabinets, cell sites, wireless backhaul, fiber optics, and cable TV.

**REGISTER BEFORE
AUGUST 31 TO SAVE ON
REGISTRATION FEES!**

WWW.ISEEXPO.COM



Amphenol Network Solutions

BOOTH 103

22425 E Appleway Ave, Ste 11,

Liberty Lake, WA 99019

Tel: 509.926.6000

Web: amphenol-ns.com

CATEGORIES: FTTX, POWER/SUSTAINABILITY, WIRELESS/5G

Headquartered in Liberty Lake, Washington, for over 36 years, Amphenol Network Solutions has been leading the industry with a high-quality, seamless product portfolio of fiber distribution, cable management, power, racks, passives, and enclosures. We leverage world-class engineering capabilities to provide innovative product solutions for the networks of tomorrow.



Benning

BOOTH 621

1220 Presidential Dr, Richardson, TX 75446

Tel: 214.553.1444

Web: benning.us

CATEGORIES: C&E, I&M, POWER/SUSTAINABILITY, SAFETY, TESTING, MISC.

Benning is a power equipment manufacturer providing standard solutions, offering customization based on customer needs paired with superior lifetime service.

BHC

BOOTH 440

7101 College Blvd, Ste 400,

Overland Park, KS 66210

Tel: 913.663.1900

Web: ibhc.com

CATEGORIES: FTTX, MAPPING/GIS, WIRELESS/5G

As one of the industry's leading telecommunications and civil engineering specialists, BHC has designed and managed thousands of miles of telecom network infrastructure across the USA. We understand that getting the fiber lit and servicing the end customer is the ultimate goal. We pride ourselves on delivering with results that exceed expectations.



Blue Diamond Industries, LLC

BOOTH 438

4040 Finn Way, Ste 240,

Lexington, KY 40517

Tel: 859.224.0415

Web: bdiky.com

CATEGORIES: POWER/SUSTAINABILITY, MISC.

Blue Diamond Industries, a member of the Hexatronic Group of Sweden, is a premier manufacturer of HDPE (High Density Polyethylene) conduit for the protection of fiber optic and power cables. We are headquartered in Lexington, KY, with manufacturing facilities in Middlesboro, KY, near the Tennessee border and Aubrey, TX, just north of Dallas.

Border States Electric

BOOTH 428

2400 38th Street S, Fargo, ND 58104

Tel: 866.483.7289

Web: borderstates.com

CATEGORIES: FTTX, WIRELESS/5G, MISC.

Border States has helped customers build fiber-to-the-home networks for over a decade, partnering with the best manufacturers in the industry. These manufacturers, combined with our teams and nearly 100 locations across 22 states, make us the best addition to your project. Employee-owned, customer-driven.

Buckingham Manufacturing Co., Inc.

BOOTH 239

1-11 Travis Ave, PO Box 1690,

Binghamton, NY 13902

Tel: 607.773.2400

Web: buckinghammfg.com

CATEGORIES: SAFETY

For 125 years, Buckingham has been the world's most trusted safety equipment manufacturer for linemen, arborists, and telecom professionals. Our customers work both above and below ground and Buckingham has numerous products for work positioning, retrieval, fall restraint, fall restriction, fall arrest, and suspension. For more information, please visit our website.



Budco, Inc.

BOOTH 304

2004 N Yellowwood Ave,
Broken Arrow, OK 74012
Tel: 800.331.2246

Web: budcocable.com

CATEGORIES: FTTX, I&M, LEGACY/
COPPER, SAFETY, TESTING, WIRELESS/5G
Budco is a stocking distribution company
supplying cable and fiber installation,
construction and identification products for
the telecommunications industry. See our
new No Lash Line Aerial Cable Placement
System, a must for aerial fiber construction.
Simple, Safe, Productive, and Efficient.
Serving the cable professional since 1970.



Visit our listing and latest
video at www.iseexpo.com

Butler America Telecom

BOOTH 333

3820 State St, Ste B,
Santa Barbara, CA 93105
Tel: 805.448.9426

Web: butlertelecomllc.com

CATEGORIES: C&E, FTTX, WIRELESS/5G
Butler America Telecom offers wireless and
wireline construction services nationwide.
Services include: Cell Site Acquisition, Cell Site
(tower/rooftop) & DAS Construction, OSP/ISP
Engineering, Central Office/Data Center
Equipment Installation and Decomm, OSP
Construction including buried drops, fiber
splicing, and installation & repair tech staffing.



C&D Technologies, Inc.

BOOTH 408

200 Precision Rd. Horsham, PA 19044
Tel: 800.543.8630

Web: cdtechno.com

CATEGORIES: FTTX, LEGACY/COPPER,
POWER/SUSTAINABILITY
C&D Technologies, Inc., is a worldwide manu-
facturer of lead-acid batteries specializing in the
reserve power market. Recently acquired Trojan
Battery, brings a portfolio of motive and solar
deep-cycle batteries to the combined company,

now one of the largest providers of energy
storage in North America. Both product families
are known for advanced technology including
pure lead, lithium-ion, and many others.



Calix

BOOTH 327

2777 Orchard Pkwy, San Jose, CA 95134
Tel: 408.314.5000

Web: calix.com

CATEGORIES: FTTX, LEGACY/COPPER, MISC.
Calix cloud and software platforms enable
service providers of all types and sizes to inno-
vate and transform. Our customers utilize the
real-time data and insights from Calix platforms
to simplify their businesses and deliver experi-
ences that excite their subscribers. The resulting
growth in subscriber acquisition, loyalty, and
revenue creates more value for their businesses
and communities.



Charles Industries LLC, An Amphenol Company

BOOTH 103

1450 American Ln, 20th Flr,
Schaumburg, IL 60173
Tel: 847.806.6300

Web: charlesindustries.com

CATEGORIES: C&E, FTTX, I&M, IOT/M2M,
MISC., LEGACY/COPPER, WIRELESS/5G
An Amphenol Company, Charles designs and
manufactures a comprehensive line of Inno-
vative Enclosed Solutions™ for wireless, FTTx,
broadband cable and utility applications. Charles'
aerial, above-grade, and buried solutions include
shrouds, splice closures, pedestals, cabinets,
hubs, building terminals, optical passives/WDM,
and handholes, all designed for maximum perfor-
mance and cost-effective deployments.



CHR Solutions

BOOTH 135

9700 Bissonnet St, Ste 2900,
Houston, TX 77036
Tel: 713.351.5111

Web: chrsolutions.com

CATEGORIES: C&E, FTTX,
MAPPING/GIS, MISC.
Building the future of Broadband. CHR
offers products and services that enable
better broadband. We specialize in B/OSS
Software business solutions, Broadband
Engineering services (including outside
plant and network design), and Managed
IT and NOC services. Our approach en-
sures our clients improve operations and
grow revenue.



Visit our listing and latest
video at www.iseexpo.com



Clearfield, Inc.

BOOTH 313

7050 Winnetka Ave N,
Minneapolis, MN 55428
Tel: 763.519.9781

Web: SeeClearfield.com

CATEGORIES: FTTX, I&M, WIRELESS/5G
Clearfield is enabling the lifestyle that better
broadband provides. Our "fiber to anywhere"
platform serves the unique requirements of
leading wireline and wireless carriers and MSO/
cable TV companies, while catering to the
broadband needs of utility/municipality, data
center, and military markets. Clearfield's product
suite, designed with labor lite technologies,
reduces labor costs and time to deploy.



WEDNESDAY, SEPTEMBER 1

11:30 AM – 6:00 PM: Exhibit Floor Open

THURSDAY, SEPTEMBER 2

11:30 AM – 3:00 PM: Exhibit Floor Open

The right material and rating **TO FIT YOUR NEEDS.**

**BOOTH
109**

- **Materials**
 - HDPE
 - Composite
 - Fiberglass
 - Polymer Concrete
 - Concrete
- **Load Ratings**
 - Pedestrian
 - Tier 8, 15, 22
 - Traffic Rated



**OLDCASTLE
POLYMER**



DURALITE™



CARSON®

UNDERGROUND ENCLOSURES

Our extensive, multi-material product lines provide you with the choices and options you need to customize and define the right enclosure for your application.

Greenbelt/Sidewalk/Concrete/Roadway Applications



CommScope

BOOTH 301

1100 CommScope Place SE,
Hickory, NC 28602
Tel: 828.324.2200

Web: commscope.com

CATEGORIES: FTTX, LEGACY/COPPER,
WIRELESS/5G, MISC.

CommScope pushes the boundaries of the communications technology with game-changing ideas and ground-breaking discoveries that spark profound human achievement. We collaborate with our customers and partners to design, create, and build the world's most advanced networks. It is our passion and commitment to identify the next opportunity and realize a better tomorrow.

Communication Network Engineering, Inc.

BOOTH 244

210 27th St North, Fargo, ND 58102
Tel: 701.356.8955

Web: cnefargo.com

CATEGORIES: C&E, FTTX, MAPPING/GIS,
VIRTUALIZATION, MISC.

For more than 20 years, the Communications Network Engineering (CNE) team has been providing services to telecommunications providers compiled of rural cooperatives, privately held corporations, municipalities, and county governments. Services CNE provides include COE Engineering, OSP Engineering, IT Services, Operations Assistance, Planning and Funding, Mapping, ROW and Permitting.



Comtest Networks

BOOTH 215

171 MacFarlane Rd, Unit E,
Ottawa, ON K2E 6V4, Canada
Tel: 877.369.5499

Web: comtestnetworks.com

CATEGORIES: C&E, I&M, LEGACY/COPPER
Comtest Networks enhances the experience of broadband for millions of customers around the world. Comtest improves the quality and reliability of next-generation networks while enhancing the customer experience overall. Comtest designs, engineers, and manufactures

all of our products in North America and we are changing the landscape of broadband through continuous innovation.



Copperhead Industries

BOOTH 632

9530 Fallon Ave NE, Monticello, MN 55362
Tel: 877.726.5644

Web: copperheadwire.com

CATEGORIES: MAPPING/GIS, SAFETY,
WIRELESS/5G

Copperhead Industries provides end-to-end tracer wire solutions for precise location of underground utilities. Every component in Copperhead's Complete Utility Locating System™ is manufactured in the USA and engineered for quality. Locating expertise and superior service make Copperhead the supplier of choice among utilities, municipalities, and engineers specifying tracer wire systems.

Corning Optical Communications

BOOTH 115

4200 Corning Place, Charlotte, NC 28216
Tel: 828.446.9425

Web: corning.com/optical-communications

CATEGORIES: FTTX, WIRELESS/5G

Since ushering in the telecommunications revolution with the invention of low-loss optical fiber in 1970, Corning has been continually innovating to increase the speed and capacity of optical networks. Today, we partner with communities everywhere to bridge the digital divide and bring fiber to the people. Learn more here.



CP Technologies LLC

BOOTH 708

15774 Gateway Circle, Tustin, CA 92780
Tel: 425.213.8327

Web: cptechusa.com

CATEGORIES: FTTX, IOT/M2M,
WIRELESS/5G

CP Technologies LLC is an industry-leading manufacturer of the highest quality fiber optic cable, enclosure, and assembly solutions. Our highly experienced team offers the best lead times in the industry on standard and custom fiber and copper assemblies including Riser, Plenum, OSP, Trunk, Drop and In/Out in any configuration wanted. We offer LC, SC, MTP, ST, FC, and CS (SM versions in APC or UPC) connectors.



Visit our listing and latest
video at www.iseexpo.com



Craftmark Cable Markers

BOOTH 232

3212 S. Cravens Rd, Fort Worth, TX 76119
Tel: 800.627.5255

Web: craftmarkid.com

CATEGORIES: C&E, SAFETY, MISC.

Craftmark Cable Markers manufactures and distributes a full line of both aerial and subsurface utility marking products. Craftmark's SpecMark Snap On cable markers are the standard of the industry. We offer a full line of stock and custom marking products.

Creek Plastics

BOOTH 544

1601 E Monroe Rd, Tecumseh, MI 49286
Tel: 517.423.1178

Web: creekplastics.com

CATEGORIES: C&E, WIRELESS/5G, MISC.

Creek Plastics is a manufacturer of HDPE pipe, 1/2 inch to 4 inch sizes. We take great pride in our products and services. Come find out why.



CyberPower Systems, Inc.

BOOTH 527

4241 12th Ave E, Ste 400,

Shakopee, MN 55379

Tel: 952.403.0009

Web: cyberpowersystems.com

CATEGORIES: FTTX

CyberPower is the industry leader in manufacturing FTTx power protection solutions for the telecom marketplace. Continually #1 in market share, our surge and battery backup solutions meet the FCC requirements for 8 and 24 hour service level requirements for broadband service providers.



Dantherm Cooling, Inc.

BOOTH 300

671 Springfield Rd,

Spartanburg, SC 29303

Tel: 864.316.6899

Web: DanthermCooling.com

CATEGORIES: POWER/SUSTAINABILITY, WIRELESS/5G, MISC.

We are the authority in cooling solutions for electronic enclosure cooling.



Visit our listing and latest video at www.iseexpo.com



Dura-Line

BOOTH 415

3221 Riverside Dr, Ste 300,

Knoxville, TN 37934

Tel: 800.847.7661

Web: duraline.com

CATEGORIES: C&E, FTTX, I&M, POWER/SUSTAINABILITY, WIRELESS/5G, MISC.

Dura-Line is a leading international manufacturer and distributor of communication and energy infrastructure solutions including conduit, cable-in-conduit, and accessories. Dura-Line's products are designed to provide protection, and fast, safe installation of communication networks for a wide variety of markets, including telecommunications, enterprise networking, energy, and transportation.



Visit our listing and latest video at www.iseexpo.com



WEDNESDAY, SEPTEMBER 1

11:30 AM – 6:00 PM: Exhibit Floor Open

THURSDAY, SEPTEMBER 2

11:30 AM – 3:00 PM: Exhibit Floor Open

WT Services: Offering the best in communication solutions for 35 years!

- Accessories
- Dispatch/Consoles
- Mobile Two-Way Radios
- Portable Two-Way Radios
- Public Safety Products
- Repeaters
- Body Cameras
- Wireless Broadband
- MOTOTRBO Digital

You can trust WT Services for all your two-way radio needs!

Nationwide service



800-687-0067

mytwowayradioshop.com



MOTOROLA
SOLUTIONS
Channel Partner



CONNECTIONS THAT COUNT!



VENDOR Q&A



Q&A with Michael Zammit

VP and General Manager, Connectivity Solutions
Go!Foton



Go!Foton PEACOC® OSP Hardened Terminal

ISE: Mike, congratulations on your Lightwave Award for Go!Foton's PEACOC® OSP Hardened Terminal! You've certainly packed a lot of useful attributes into such a small device.

MZ: Thank you. We conceived and developed this terminal as a very versatile yet easy-to-implement connectivity solution especially for operators confronting the challenge of growing fiber densification in the outside plant.

ISE: Can you describe some of its advantages?

MZ: Sure. Our high-density OSP Hardened Terminal is an easily re-enterable box with a very small footprint, designed for fast installation and plug-and-play operability using high-quality fiber terminations. The result is quick, low cost turn-up of field connections.

ISE: And, of course, the terminal utilizes some key Go!Foton connectivity breakthroughs, including PEACOC®. What are the benefits of PEACOC® integration?

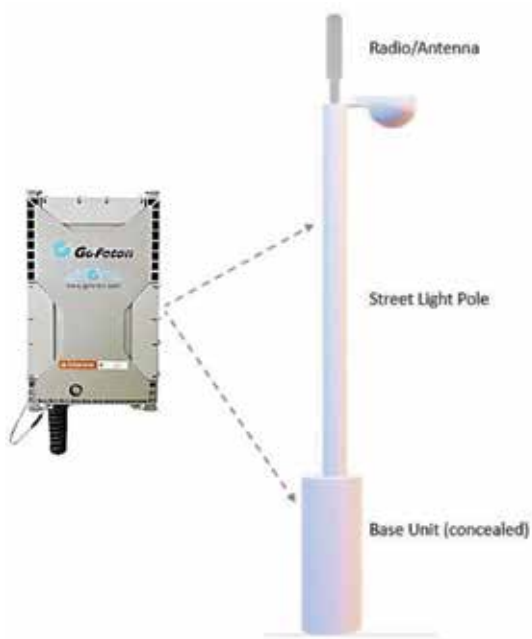
MZ: PEACOC®, our fiber management Platform with Enhanced Access for Compact Optical Connectors, features spreadable adapters that enable fast and easy access to small form-factor optical connectors, even for the biggest hands under what are often less than ideal OSP conditions.

ISE: What mounting options are available?

MZ: The terminal can be easily mounted on a pole, wall, or strand, and is compact enough to support concealed pole applications as well.

ISE: Mike, thanks so much for your insights.

MZ: It was my pleasure.



Go!Foton PEACOC® Fiber Management Platform

Go!Foton Headquarters
28 Worlds Fair Drive
Somerset, NJ 08873, USA

Go!Foton West Coast Sales
100 Century Center Court, Suite 203
San Jose, CA 95112, USA

Extended Forecast:

Spreadable adapters leading to clear skies.

PEACOC® Compact HD Fiber Terminal



2020
4.5 **LIGHTWAVE**
INNOVATION
REVIEWS

Are you tired of
expensive and proprietary
hardened drops?

Join the  Revolution!

Be sure to check out
all of our new OSP terminals
at ISE Expo Booth #321.



East Penn Manufacturing Co.

BOOTH 626

PO Box 147, Lyon Station, PA 19510

Tel: 610.682.6361

Web: dekabatteries.com

CATEGORIES: POWER/SUSTAINABILITY, WIRELESS/5G

Since 1946, East Penn Manufacturing Co. has developed an enviable reputation for world-class quality products. East Penn is a leading manufacturer of Deka valve-regulated lead acid (VRLA) batteries featuring the revolutionary Deka Fahrenheit for use in high temperature and controlled environments specific to telecommunications, UPS, solar, emergency lighting, and other reserve power applications.

ElectriCom

BOOTH 242

1660 W Hospital Rd, Paoli, IN 47454

Tel: 812.216.3466

Web: electricominc.com

CATEGORIES: FTTX, POWER/SUSTAINABILITY
ElectriCom provides all facets of telecommunications and power construction services including design-build and SSP arrangements. Telecom includes fiber and copper cable placement, splicing, and removal. We also provide right-of-way clearance/maintenance, and construct manhole and conduit systems, premises wiring, telecom system installation, and gas distribution.

ElectroWire, A GCG Company

BOOTH 241

5940 Cabot Pkwy, Alpharetta, GA 30005

Tel: 770.316.8439

Web: electrowire.com

CATEGORIES: C&E, FTTX, WIRELESS/5G

ElectroWire focuses on serving independent telephone companies, RUS plow contractors, utilities, municipalities, co-ops, wireless providers, tower owners, and CLEC's. Our national logistics network and large inventory allow us to deliver products when and where you need them. Our capabilities include staging and kit-ting, wire and cable management, cut to length, product sourcing, and other services.

EMKA, Inc.

BOOTH 421

1961 Fulling Mill Rd, Middletown, PA 17057

Tel: 717.986.1111

Web: emkausa.com

CATEGORIES: POWER/SUSTAINABILITY, SAFETY, WIRELESS/5G

EMKA manufactures locking system hardware to hinge, latch, seal, and electronically secure panel doors of all sizes. The products are offered in various material types, installation options, and meets many industry standards such as UL Recognized Components, hygiene tested latches, UL50 UL50E rated gaskets, and IP rated hardware.



Emtelle

BOOTH 607

Haughhead, Hawick, TD9 8LF,

United Kingdom

Tel: 0-1450-364-030

Web: emtelle.com

CATEGORIES: FTTX, POWER/SUSTAINABILITY, WIRELESS/5G

Emtelle is a global manufacturer of pre-connecto-rised, blown fibre cable & duct network solutions, serving key FTTX players across 100+ countries. Emtelle is a full solution provider that goes the extra mile from concept to completion through supply, high-quality solutions, expert technical support, and a first-class customer experience.



EnerSys

BOOTH 245

2366 Bernville Rd, Reading, PA 19605

Tel: 604.436.5900

Web: enersys.com

CATEGORIES: LEGACY/COPPER, POWER/SUSTAINABILITY, SAFETY

Surging bandwidth demand led by 5G and small cell deployment is transforming the communications network. EnerSys® is the only company focused on the entire power ecosystem, using power and energy storage systems to create solutions dedicated to powering the modern network, lowering energy and labor costs while maintaining the world-class network reliability we've come to depend on.



Engenuity Communications Corporation

BOOTH 547

3545 Stern Ave, St. Charles, IL 60174

Tel: 630.444.0778

Web: engenuitycom.com

CATEGORIES: FTTX, I&M, LEGACY/COPPER, TESTING, WIRELESS/5G, MISC.

Engenuity provides solutions to the everyday challenges associated with installing and maintaining network connectivity. OSP solutions include enclosures for repairing fiber cuts, FTTX closures, GPON quality fiber splitters, and fiber cleaning products. Premise solutions include equipment mountings, interface panels, lightning protection for fixed wireless antennas, and SFP testing.



ESPi

BOOTH 710

630 Lincoln Ave, Clay Center, KS 67432

Tel: 877.799.3774

Web: espincorp.com

CATEGORIES: C&E, FTTX, POWER/SUSTAINABILITY
ESPi understands the problems telcos face in today's world; whether it's remote 48V needs where no commercial power exists, powering 12V ONTs in single units or multiple units, switching power supplies or backup power. ESPI provides comprehensive on-grid and off-grid power solutions that are easy to install, dependable, and reduce truck rolls; saving the customer time and money.



ETA International

BOOTH 439

5 Depot St, Greencastle, IN 46135

Tel: 765.653.8262

Web: eta-i.org

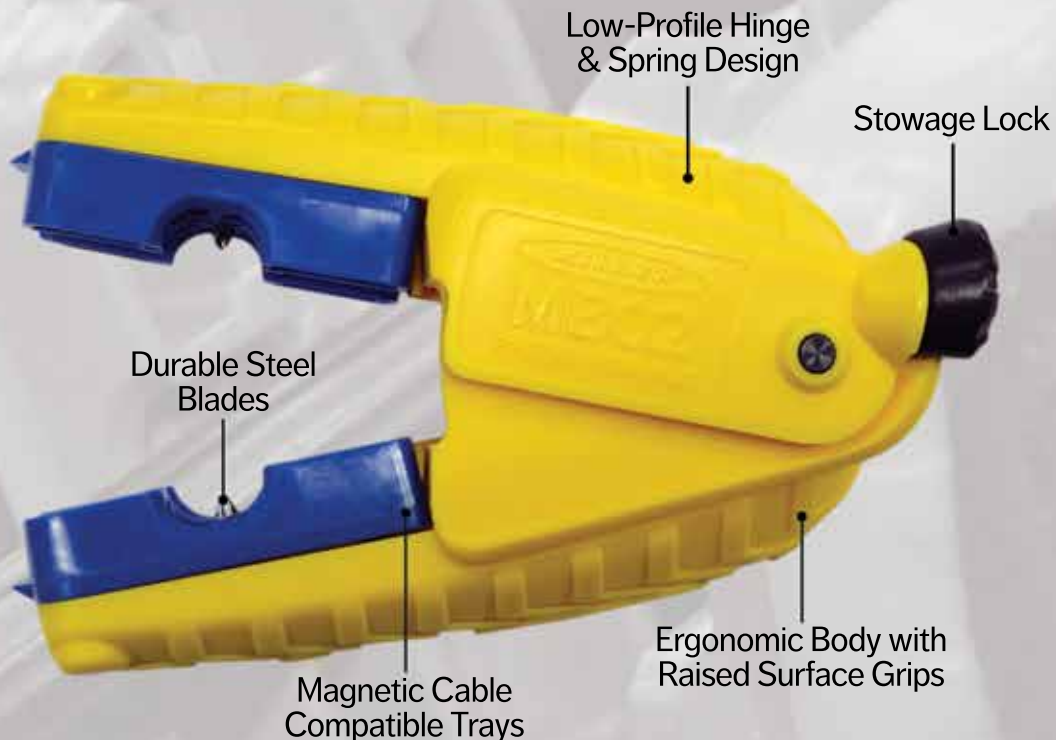
CATEGORIES: EDUCATION, FTTX, WIRELESS/5G
ETA International represents high tech professionals with over 90 accredited technical certifications including fiber optics, data cabling,



A RIPLEY® BRAND

Just Add Fiber.

The Cable Slitter You've Been Waiting For



The ergonomic, multi-purpose **Miller® MB02 Series** is a precision slitter designed to perform ring and longitudinal cuts on various dielectric cables up to 0.60" in diameter. The tool features a modular tray design that provides quick mid-span and end stripping on a range of compatible cables.



SCAN ME TO
LEARN MORE



BOOTH 340 / ISE EXPO
WWW.RIPLEY-TOOLS.COM

and wireless communications. Developed by industry experts, ETA certifications are vendor-neutral, third party assessments that test both knowledge and hands-on skills. ETA certifications align with international standards and industry best practices.

FIBERONE

FIBERONE

BOOTH 606

5 Technology Place,
East Syracuse, NY 13057
Tel: 866.434.8877

Web: fiberonellc.com

CATEGORIES: FTTX

FIBERONE provides solid and flexible fiber optic products to support a wide range of configurations, densities, and connector options for FTTx networks. Products include Fiber Distribution Hubs, U-Series Fiber Connectivity System, passive components, and custom fiber products and assemblies.

FINLEY

**Finley Engineering
Company, Inc.**

BOOTH 326

104 East 11th St, Lamar, MO 64759
Tel: 417.682.5531

Web: FinleyUSA.com

CATEGORIES: C&E, FTTX,
POWER/SUSTAINABILITY

Finley Engineering is a full-service engineering consultancy with a successful history of consulting, design, engineering and project management for both the broadband and energy industries. Finley works with a variety of client types such as private companies, cooperatives, municipalities, large carriers, investor-owned companies, and a variety of government entities.



GMP Tools

BOOTH 515

3111 Old Lincoln Hwy, Trevose, PA 19053
Tel: 215.357.5500

Web: gmptools.com

CATEGORIES: C&E, FTTX, I&M, LEGACY/
COPPER, POWER/SUSTAINABILITY, SAFETY
GMP Tools provides solutions for aerial cable construction equipment & tools, copper & fiber optic cable placing & blowing equipment, man-hole & duct tools, installer's hand tools, warning signs, tents & tarps, winches, vehicle accessories, specialty hardware, related supplies, and more. GMP is accepted as the industry standard for cable lashing, fiber blowing & pulling, rod-
ding, and all related accessories.

GNB
INDUSTRIAL POWER
A DIVISION OF STRYTEN MANUFACTURING LLC

**GNB Industrial Power,
A Division of Stryten
Manufacturing LLC**

BOOTH 133

3700 Mansell Rd, Ste 400,
Alpharetta, GA 30022
Tel: 470.788.9972

Web: Stryten.com

CATEGORIES: POWER/SUSTAINABILITY,
WIRELESS/5G, MISC.

GNB Industrial Power provides a suite of essential lead battery technologies and services, including chargers and racking systems, used for backup power in the telecommunications, uninterruptible power supply (UPS), railway, utility, and renewable industries.



Go!Foton Corporation

BOOTH 321

28 World Fair Dr, Somerset, NJ 08873
Tel: 267.784.1784

Web: GoFoton.com

CATEGORIES: FTTX, IOT/M2M, WIRELESS/5G

Go!Foton is a leading provider of ISP & OSP fiber connectivity solutions for telecom and broadband access applications. Our newly introduced line of high-density OSP terminals offer superior craft access in a highly compact space without compromising performance and reliability. With over 1,000 dedicated employees worldwide, high volume production allows us to deliver lead times unmatched in the industry.

GPRS

BOOTH 235

5217 Monroe St, Ste A, Toledo, OH 43623
Tel: 419.843.9804

Web: gp-radar.com

CATEGORIES: MAPPING/GIS, SAFETY

GPRS services, such as utility locating, concrete scanning and video pipe inspection (CCTV), reduce risk for you, your team, and your assets. When our project managers locate subsurface structural elements and pipes, the result for our clients is damage prevention and a reduction of risk. At GPRS, safety is always on our radar.

**REGISTER BEFORE
AUGUST 31 TO SAVE ON
REGISTRATION FEES!**

WWW.ISEEXPO.COM

Gain knowledge and get a chance to win \$250!

Attend workshops and seminars to collect entries into the
Education Expert raffle for \$250! See page 96 for details.





Graybar

BOOTH 601

11885 Lackland Rd, St. Louis, MO 63146

Tel: 314.573.5700

Web: graybar.com

CATEGORIES: FTTX, LEGACY/COPPER, POWER/SUSTAINABILITY, SAFETY, TESTING, WIRELESS/5G

Graybar is a leading distributor of high quality electrical, communications, industrial, security and networking products, and specializes in related supply chain management and logistics services. Through its network of more than 290 North American distribution facilities, it stocks and sells products from thousands of manufacturers, serving as the vital link to hundreds of thousands of customers.



Visit our listing and latest video at www.iseexpo.com



GS Yuasa Energy Solutions, Inc.

BOOTH 345

1150 N Meadow Pkwy, Ste 110, Roswell, GA 30076

Tel: 800.472.2879

Web: GSYuasa-ES.com

CATEGORIES: C&E, FTTX, I&M, POWER/SUSTAINABILITY, WIRELESS/5G, MISC. GS Yuasa Energy Solutions, Inc. (GYES) is an American subsidiary of the 100-year-old GS Yuasa Corporation (GYC), the world's second largest battery company. GYES focuses on the energy storage and reserve power markets. GYES's advanced technologies provides successes in the telecom, UPS, alarm & security, and energy storage markets.



Hexatronic North America

BOOTH 101

4040 Finn Way, Ste 240, Lexington, KY 40517

Tel: 919.669.4394

Web: hexatronic.com

CATEGORIES: FTTX

Hexatronic North America, part of the global Hexatronic Group, offers a wide selection of fiber system solutions and products for FTTH, metro, access, and submarine networks. Our solutions consist of air-blown fiber systems and network systems developed for networks with the highest requirements when it comes to scalability, short installation time, and performance.



HIGH PERFORMANCE FIBER BLOWING MACHINES

FTTX | ACCESS NETWORK | BACKBONE



High-performance fiber blowing machines from Jameson raise the bar when it comes to fast setup, safe operation, and efficient installation of blown fiber optic cable.

Featuring a complete line-up serving a broad array of inside and outside plant installations, Jameson is ready for your next backbone network, access network, or FTTx fiber install.

- Proven reliability and performance in the toughest environments
- Advanced protection technology prevents damage to fiber or cable
- Hydraulic powered units provide superior pushing force
- On-demand equipment inventory with U.S. based service center

CONTACT US TODAY TO SCHEDULE A DEMO.



Scan QR Code to Learn More About Jameson Fiber Blowing

JamesonTools.com | 800.346.1956



Hubbell Power Systems

BOOTH 121

701 Millennium Blvd, Greenville, SC 29607

Tel: 864.678.1000

Web: hubbell.com

CATEGORIES: FTTX, LEGACY/COPPER, MISC.

Hubbell Utility Solutions is a global manufacturer of infrastructure products that support various utilities and communications networks. Our broad offerings include handholes, pedestals, pole and drop line hardware, slack storage, bonding and grounding, splice closures, guy anchors, and ADSS hardware -- all to support both fiber and coax networks.



Innerduct.com

BOOTH 342

409 7th Ave SE, Cedar Rapids, IA 52401

Tel: 319.551.7283

Web: innerduct.com

CATEGORIES: FTTX, WIRELESS/5G, MISC.

Innerduct.com is the largest independent stocking provider of HDPE innerduct, Tier 22 handholes, and fiber optic cable in the United States. We have multiple locations to serve the entire nation. Please check our website for all of our products and locations.



INNO Instrument America, Inc.

BOOTH 610

2010 Valley View Ln, Ste 140,

Dallas, TX 75234

Tel: 214.484.3627

Web: innoinstrument.com

CATEGORIES: C&E, FTTX, I&M, TESTING, WIRELESS/5G

INNO Instrument has been contributing to building optical communication and connecting the world by developing, producing, and providing the technology and solutions used in daily life and throughout many major industries. We solely focus on the production of high quality products.

We are eagerly awaiting to create a long-term business destination and worldwide partners. We are proud to offer the VIEW PRO SERIES.



IQGeo

BOOTH 734

1670 Broadway, Ste 2215,

Denver, CO 80202

Tel: 720.577.4732

Web: iqgeo.com

CATEGORIES: C&E, FTTX, I&M, IOT/M2M, MAPPING/GIS, WIRELESS/5G

IQGeo delivers award-winning geospatial software solutions to telecommunication and utility network operators, from large multinationals to smaller regional providers. The IQGeo and OSPInsight software suites improve productivity and collaboration across enterprise planning, design, construction, maintenance, and sales processes, reducing costs and operational risks while enhancing customer satisfaction.



Jameson, LLC

BOOTH 339

1451 Old North Main St, Clover, SC 29710

Tel: 800.346.1956

Web: jamesontools.com

CATEGORIES: FTTX, I&M, LEGACY/COPPER, POWER/SUSTAINABILITY, SAFETY, WIRELESS/5G

Jameson is a leading provider of professional-grade tools supporting telecommunication cable installation and maintenance. We feature a broad range of tools and equipment for overhead cable placement, underground locating, fiber blowing, cable pulling, tree trimming/line clearance, wiring/splicing, tool storage, and high-performance lighting products. Jameson - Providing solutions wherever the job takes you.



Visit our listing and latest video at www.iseexpo.com

Jonard Tools

BOOTH 426

200 Clearbrook Rd, Ste 128, Elmsford, NY 10523

Tel: 914.793.0700

Web: jonard.com

CATEGORIES: FTTX, I&M, LEGACY/COPPER

Founded in 1958, Jonard Tools® manufactures tools for the telecom, CATV, fiber optic, home automation, security & alarm, and electrical markets. Jonard Tools designs and engineers patented products by utilizing customer partnerships to create innovative solutions for industry needs. New tools are released each month and are all Made For Life® with lifetime warranties.

KNET Co., Ltd.

BOOTH 639

157 Columbus Ave, 4th Flr,

New York, NY 10023

Tel: 646.897.9329

Web: e-knet.com

CATEGORIES: FTTX, MISC.

KNET Co., Ltd. manufactures HDPE microduct fiber pathways and offers a broad range of products to meet the many different deployment scenarios. KNET is ISO 9001/TL9000 certified and has Telcordia GR 3155 Certified products.

Laser Technology, Inc.

BOOTH 541

6912 S Quentin St, Ste A,

Centennial, CO 80112

Tel: 303.649.1000

Web: lasertech.com

CATEGORIES: MAPPING/GIS, SAFETY, MISC.

At Laser Tech, we have continuously maintained our passion in providing industries with the most innovative laser-based speed, distance, and sensor measurement instruments, and engineering solutions for field measurements using our reflectorless laser technology. Our handheld lasers and mapping accessories let you capture accurate data safely, and more efficiently than any alternative method.

**REGISTER BEFORE
AUGUST 31 TO SAVE ON
REGISTRATION FEES!**

WWW.ISEEXPO.COM

Win an XG2

Visit Platinum Tools
at ISC West
Booth #7043

Introducing **NETXPERT** XG2
FIBER • WIFI
COPPER



10G
SPEED
CERTIFIER



MADE IN
USA

The First 10Gig Speed Certifier for Both Copper & Fiber with Wifi Network Testing

- Ethernet speed certification up to 10Gb over copper & fiber
- Complete active network testing over copper, fiber & Wifi
- Cable qualification to IEEE standards
- TDR & fiber cable length measurement
- PoE testing up to 90W (PoE++)

Learn more at platinumtools.com/XG2



PLATINUM
TOOLS

Making Connections EZ for Over 20 Years
800.749.5783 • platinumtools.com



LEOCH® Battery Corporation

BOOTH 614

19751 Descartes, Unit A,
Foothill Ranch, CA 92610
Tel: 949.588.5853

Web: leoch.com

CATEGORIES: POWER/SUSTAINABILITY,
WIRELESS/5G, MISC.

LEOCH is a global leader in battery manufacturing, offering NEBS™ Level 3 certified battery solutions for both outside plant and central office battery systems. Our incomparable range of batteries include: Pure Lead, Gel, Lithium, and much more. Whether your requirement demands long life, partial-state-of-charge operation or unique footprints -- we have the right battery to fit your needs.

Light Brigade

BOOTH 441

835 N Central Ave, D-132, Kent, WA 98032
Tel: 800.451.7128

Web: lightbrigade.com

CATEGORIES: EDUCATION, FTTX, SAFETY

Light Brigade has trained over 60,000 technicians, installers, engineers, designers, and other support staff worldwide in a variety of industries. Light Brigade's instructor-led, online, and custom classes focus on fiber optic installation, testing, and troubleshooting, as well as engineering design.

Little Giant Ladder Systems

BOOTH 633

1198 N Spring Creek Place,
Springville, UT 84663
Tel: 800.453.1192

Web: littlegiantladders.com

CATEGORIES: EDUCATION, MISC., SAFETY

We craft new products geared toward making safer ladders that help solve real problems. The increased awareness and prioritization of ladder safety is making Little Giant the go-to company for safe climbing solutions. As we continue our research, engineering and developing the best designs and materials, you will see a robust variety of new products and training, and we can't wait to share that with you.

Locusview BOOTH 542

626 W. Randolph St, Ste C-100,
Chicago, IL 60661
Tel: 773.899.6191

Web: locusview.com

CATEGORIES: FTTX, MAPPING/GIS,
WIRELESS/5G

Locusview equips energy, telecom, and water companies with a Digital Construction Management (DCM) platform to help them manage infrastructure capital projects from planning to revenue. The solution enables all stakeholders and contractors to streamline data flow and manage the 3 crucial phases of infrastructure construction projects: Planning, Construction, and Close-Out.



Maverick

BOOTH 238

1 Westinghouse Plaza, Ste D6,
Boston, MA 02136
Tel: 617.799.3277

Web: maverickcorporation.com

CATEGORIES: C&E, SAFETY, WIRELESS/5G
Maverick is a full-service engineering, procurement and construction, and operator of communications and power networks throughout the United States and Europe. Maverick delivers detailed design, innovative engineering, professional installation, and infrastructure management to municipal and state governments, power companies, and communications providers throughout the world.

Megger

BOOTH 533

2621 Van Buren Ave, Norristown, PA 19403
Tel: 610.656.8500

Web: us.megger.com

CATEGORIES: TESTING, WIRELESS/5G

Megger is the premier provider of portable electric test/measurement instruments. Although known as the expert in qualifying the telecom power grid, it is best known for its range of insulation testers. Precision test equipment for communications testing applications is essential to a professional test and installation engineer's job. Megger will help you and your customers with testing solutions.

MICHEL'S® POWER, INC.

Michels Corporation

BOOTH 328

817 Main St, Brownsville, WI 53006
Tel: 920.583.3132

Web: michels.us

CATEGORIES: FTTX,
POWER/SUSTAINABILITY, MISC.

Michels is an energy and infrastructure contractor in North America and abroad. Our underground and utility services include: directional drilling, trenching, plowing, manholes and conduits, cable pulling and blowing, splicing, testing and cutover, on-rail and conventional plowing and installation of fiber optics, signal and electrical installation.



Millennium

BOOTH 445

120 S. Wright St, Delavan, WI 53115
Tel: 262.249.8705

Web: mymillennium.us

CATEGORIES: C&E, FTTX, LEGACY/COPPER,
MAPPING/GIS, TESTING, MISC.

Millennium is your materials distributor for telecommunications products. From OSP to ISP materials, we stock over 1,000 items in our 12 distribution locations to meet your needs and keep your projects on-time and on-budget. We help you manage the details from materials management, leasing, and financing options for capital equipment needs, to stocking what you need, when you need it.



Milwaukee Tool

BOOTH 433

13135 W Lisbon Rd, Brookfield, WI 53005
Tel: 800.729.3878

Web: milwaukeetool.com

CATEGORIES: SAFETY, TESTING, MISC.

Milwaukee Tool has led the industry in developing innovative solutions that deliver increased productivity and unmatched durability for our users. Through our world-leading M12™ and M18™ cordless systems, jobsite lighting,



Telecom



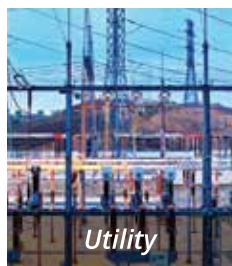
Enterprise



Broadband



Military



Utility



Transportation

Plan for the Network of **Tomorrow** when **Building Today!**

MaxCell's unique fabric construction conforms to the cables placed within, greatly reducing wasted space compared with rigid innerduct. MaxCell is perfect for Greenfield or congested conduits, curb to building, ISP, and high density or capacity applications. Available in sizes to fit all conduits, MaxCell adds pathways quickly and is installed easily and cost effectively.

MaxCell[®]
Future Network Flexibility

The bottom line: MaxCell helps you expand capacity today, preserve space for future bandwidth requirements and reduce total project costs.

Learn more at
www.MaxCell.us

Design and fabrication of MaxCell is patent protected.

time-saving accessories, and innovative hand tool and storage products, we are dedicated to delivering a continuous flow of advanced, trade-specific solutions.



MP Nexlevel, LLC

BOOTH 511

500 County Rd 37 E, Maple Lake, MN 55358
Tel: 320.963.2400

Web: mpnexlevel.com

CATEGORIES: FTTX, I&M, MISC.

For more than 5 decades, MP Nexlevel has offered expertise in planning, installation and maintenance of aerial and underground infrastructure construction work. Our comprehensive construction services, FTTH, directional drilling, splicing, plowing, trenching, and more cover the entire spectrum of overhead and underground infrastructure installation.



Multilink, Inc.

BOOTH 104

580 Ternes Ave, Elyria, OH 44035
Tel: 440.366.6966

Web: gomultilink.com

CATEGORIES: FTTX, POWER/SUSTAINABILITY, WIRELESS/5G

Multilink, Inc. is an industry-leading designer, developer, and manufacturer, since 1983, in the US of OSP & LAN premise products including fiber optic cables, assemblies, splitters, closures, cabinets, power supplies, and raceway molding for existing networks and 5G builds.



Musco

BOOTH 435

100 1st Ave W, Oskaloosa, IA 52577
Tel: 641.673.0411

Web: musco.com

CATEGORIES: MISC.

Since 1976, Musco has focused on the design and manufacture of sports and infrastructure lighting systems. Today, in addition to these

products, we are proud to offer our Communication-Structure Systems™, a complete wireless structure from foundation to pole top. It's easy, cost-effective installation can be completed in 2 days or less, making it the obvious choice.



NEPTCO, Inc., A Chase Corporation Company

BOOTH 446

1954 Main St, SE, Hickory, NC 28602
Tel: 800.323.4182

Web: chasecorp.com

CATEGORIES: C&E, FTTX, I&M, MAPPING/GIS, SAFETY, WIRELESS/5G

NEPTCO is the pioneering company that created MULETAPE®, which allows the user to thread measure and pull with a single product. TRACE-SAFE®, the only water blocking tracer wire system for locating underground utilities on the market, is light weight, footage marked, and easy to install using our gel filled connectors.



Netcon, LLC

BOOTH 432

601 Brickell Key Dr, Ste 901,
Miami, FL 33131
Tel: 786.408.6712

Web: netconamericas.com

CATEGORIES: C&E, EDUCATION, I&M, IOT/M2M, LEGACY/COPPER, MAPPING/GIS, POWER/SUSTAINABILITY, TESTING, WIRELESS/5G

We provide a software ConnectMaster that maximizes savings with enhanced GIS technology: Planning: technical choices, target areas and cost estimation; Design: faster design and better BOM accuracy; Construction: mitigation of errors, work orders and project commissioning; Operation: faster viability studies, field support, capacity management and geo-marketing; and Maintenance: faster response to failures.



Visit our listing and latest video at www.iseexpo.com



NTDPC

BOOTH 142

16361 Table Mountain Pkwy,
Golden, CO 80403
Tel: 913.884.1492

Web: ntdpc.com

CATEGORIES: EDUCATION, FTTX, LEGACY/COPPER

The NTDPC is a non-competitive forum dedicated to promoting the protection of underground facilities, subsurface facility awareness, and the use of One Call notification systems. Our goal is to prevent damage to the buried facilities that form the telecommunications infrastructure of the US and Canada. End-to-end integrity and ongoing reliability of these facilities are vital to our shared interests.



A Furukawa Company

OFS

BOOTH 403

2000 NE Expressway, Norcross, GA 30071
Tel: 888.342.3743

Web: ofsoptics.com

CATEGORIES: FTTX, WIRELESS/5G, MISC.

OFS is a world-leading designer, manufacturer, and provider of optical fiber, fiber optic cable, connectivity, FTTX, and specialty photonics products. We provide reliable, cost-effective solutions for a broad range of applications including telecommunications, medicine, government, aerospace, and defense. These products help our customers meet the needs of consumers and businesses both today and in the future.

Oldcastle Infrastructure

BOOTH 109

7000 Central Pkwy, Ste 800,
Atlanta, GA 30328
Tel: 888.965.3227

Web: oldcastleinfrastructure.com

CATEGORIES: C&E, FTTX, TESTING, WIRELESS/5G

Oldcastle Infrastructure provides the largest product breadth of underground enclosures protecting essential infrastructure connections for communications and telecom markets. Please visit our website to match specified product material type, size, and tier ratings to application needs.



Orion Cordage

BOOTH 732

953 Benton Ave, Winslow, ME 04901

Tel: 800.848.4405

Web: orionropeworks.com

CATEGORIES: SAFETY, MISC.

Orion Cordage offers an extensive line of polyester, detectable, and aramid pull tapes as well as a full line of twine and cordage. For 150 years, we've developed solutions for our customers with passion, precision, and excellence. We pride ourselves on meeting the most demanding requirements.



Pearce Services, LLC

BOOTH 233

1222 Vine St, Ste 301,
Paso Robles, CA 93446

Tel: 805.467.2528

Web: pearce-services.com

CATEGORIES: FTTX, WIRELESS/5G, MISC.

Pearce Services is a leading national provider of operations, maintenance, and engineering services for mission-critical telecommunication and renewable energy infrastructure. Offering innovative, tech-enabled services nationwide, we can deploy our highly trained technicians safely, quickly, and efficiently to provide you unmatched response times, quality, and consistent service for your distributed assets.



Petroflex NA Ltd.

BOOTH 240

1305 N I-35, Gainesville, TX 76240

Tel: 800.433.5711

Web: petroflexna.com

CATEGORIES: FTTX, I&M, WIRELESS/5G

Petroflex HDPE is the superior material to protect your fiber and cable investment. Offering unmatched chemical and corrosion resistance, flexibility and durability, ease of installation with long reel lengths and reduced joining, it is the

material of choice for the reliability you demand. Smoothwall and Corrugated are RUS listed.



Phoenix Loss Control

BOOTH 620

PO Box 271504, Littleton, CO 80127

Tel: 347.925.0110

Web: phoenixlc.com

CATEGORIES: C&E, FTTX, I&M,

POWER/SUSTAINABILITY, SAFETY, MISC.

Phoenix Loss Control provides investigation and recovery services for third party damages to outside plant infrastructure of utilities, cable/internet providers, and telecoms. We help our customers recover the costs of repairing their coax/fiber lines, gas/electrics lines, or other equipment damaged by activities such as construction or motor vehicle accidents.

Plug Power

BOOTH 100

968 Albany Shaker Rd, Latham, NY 12110

Tel: 509.228.6500



A Better Way to Build and Operate Networks

- Industry's only fiber-fed and IP-enabled DLC
- Unwavering support for analog services
- Solution for Class-5 switch replacement
- Emergency 911 redundancy and diversity
- Ideal for Broadband Stimulus projects

Learn more at www.tellabs.com



Your Next Generation UPS

SOLAR -

THE RIGHT SOLUTION, RIGHT NOW.

According to the U.S. Energy Information Administration (EIA) the consumption of renewable solar energy grew by 22% in 2020. The increase means that solar energy use is now at record high levels and accounts for 11% of the overall energy consumption in the United States. **Why? It has become a more affordable and effective solution.**

The federal solar Investment Tax Credit (ITC) plays a vital role in driving the growth in solar energy consumption. The ITC provides a 26% tax credit for solar projects on both commercial and residential properties that start construction before December 31, 2022. Dropping down to a 22% credit in 2023. State and local incentives are also available in some areas and are worth researching.

During the network planning process, special consideration should be given for the implementation of solar energy in your network design. The tax incentives, coupled along with advancements in solar technology can make the installation and operation of a solar UPS the most cost-effective option over traditional methods such as utility power or generator sets. This is especially true in remote locations where utility power is not readily available.



VOLTAR 2.0 Solar UPS

The cost to run utility power to a remote site can vary greatly, depending on the site location, terrain and proximity to public utility connections, costs can range from \$10,000 to well over \$50,000. The utilization of a solar UPS, such as the VOLTAR 2.0, is pennies on the dollar in comparison and the perfect solution for improving network coverage over a vast service area.

Solar. The right solution for improved network resiliency, low operating costs and less dependence on the power grid.

For solutions to your solar power UPS needs and input during the network planning and design stage visit www.espicorp.com. There you will find a number of solutions or alternatives to fit the specific needs of your business, as well as contact information for sales and production engineers.



MEET THE TITAN CREW

Outdoor UPS Products Ready for Work

- Eliminate appointments or entering customer's home
- Reduce truck rolls with ONT reset capability
- Mount up to 115ft. from power outlet*
- Operates in extreme climate, rated for -40°F to 161°F

*Titan and Titan-24 UPS units only

Web: plugpower.com

CATEGORIES: POWER/SUSTAINABILITY

Plug Power is the leading provider of clean hydrogen and zero-emission fuel cell solutions that are both cost-effective and reliable. Our GenSure hydrogen fuel cells offer a backup power solution that makes sense economically, operationally, and sustainably.



Plumettaz America Corporation

BOOTH 535

225 Thrasher Pike, Soddy Daisy, TN 37379

Tel: 423.212.1900

Web: plumettaz.com

CATEGORIES: FTTX, LEGACY/COPPER

Plumettaz America Corporation is a world-leading manufacturer and supplier of cable jetting equipment featuring SuperJet, CableJet, MiniJet, MicroJet, an Ultimaz systems. For over 35 years, the vision and performance of PLUMETT brand cable installation systems has been at the forefront of cable laying technology. We offer purchase, lease-purchase, and rental options for all jetting systems.



Positron Access Solutions

BOOTH 147

5101 Buchan St, Ste 220,
Montreal, QC H4P 2R9, Canada
Tel: 514.354.2220

Web: positronaccess.com

CATEGORIES: C&E, FTTX, I&M, IOT/M2M, LEGACY/COPPER, POWER/SUSTAINABILITY
Extend gigabit services from fiber or fixed wireless to each occupant in MDUs over the existing in-building telephone pairs or coax and to SFUs with Positron's G.hn Gigabit Access Multiplexer (GAM). Eliminate construction disruption, reduce CapEx by 70%, and get the fastest time to revenues (installs in hours with zero-touch provisioning).



Visit our listing and latest video at www.iseexpo.com



Power & Tel

BOOTH 409

200 Keough Dr, Piperton, TN 38017

Tel: 901.866.3251

Web: ptsupply.com

CATEGORIES: FTTX, POWER/SUSTAINABILITY, SAFETY, TESTING, WIRELESS/5G, MISC.

Power & Tel is an industry leader in the procurement, sales, material management, and distribution of product solutions to the global telecommunications and cable TV marketplaces.



Powerline Hardware

BOOTH 526

6841 Phillips Pkwy Dr South,
Jacksonville, FL 32256

Tel: 904.288.9880

Web: powerlinehardware.com

CATEGORIES: C&E, WIRELESS/5G, MISC.

Powerline Hardware is trusted by electric utility companies for over 30 years. Now stocking communications hardware, anchors, ground rods, D clamps, KUL's, etc., all in stock in Jacksonville, FL. Most of the products we sell are manufactured in our plant in India.

PowerTec Solutions International

BOOTH 138

44 Revolution Dr, Franklin, KY 42134

Tel: 270.813.1110

Web: powertecsolutions.net

CATEGORIES: FTTX

PowerTec Solutions International (PSI) is a privately held technology design and manufacturing company focused on providing custom DC Power, UPS, and other standby power solutions to compliment global FTTx, wireline and wireless applications.



PPC Broadband, Inc., A Belden Brand

BOOTH 615

6176 E Molloy Rd,
East Syracuse, NY 13057
Tel: 315.247.0295

Web: ppc-online.com

CATEGORIES: C&E, EDUCATION, FTTX, I&M, LEGACY/COPPER, POWER/SUSTAINABILITY, WIRELESS/5G

PPC Broadband, Inc., headquartered in Syracuse, NY, boasts a diverse product portfolio supporting network applications from the headend through the outside plant and customer premises. Innovating for more than 75 years, PPC has delivered many industry firsts and holds more patents in connector technology than any other company worldwide.



Visit our listing and latest video at www.iseexpo.com



Precision Group, LLC

BOOTH 443

95 Brown Rd, Franklin, KY 42134

Tel: 270.776.9903

Web: GoPrecisionGroup.com

CATEGORIES: FTTX, POWER/SUSTAINABILITY, WIRELESS/5G

We are a service-focused team of broadband experts motivated to design differently. Precision Group's innovative product solutions are built to strengthen future networks and simplify end-user experience.



Preformed Line Products

BOOTH 127

660 Beta Dr, Mayfield Village, OH 44143

Tel: 440.461.5200

Web: preformed.com

CATEGORIES: FTTX, LEGACY/COPPER, TESTING
Preformed Line Products (PLP®) is a world-

For all of your OSP applications, Rainbow is there...

Visit us at
Booth 500

Aerial and pole-mounted applications for Rainbow Technology products...



#4047 Insect Tag II is the safe, easy way to prevent insects in pole-mounted equipment

#79701 Pole Setting Foam saves time and money and replaces traditional methods of straightening and setting poles.



#88500 Telco & Power Wasp & Ant Spray for a fast knockdown. Safe for use on and in utility and telecom equipment.

Use the #4357 Insect Probe to kill insects in the most hard-to-reach spots.



Trust Rainbow to help with...

- Sourcing
- Evaluations
- Cost Savings
- Consolidation
- Federal, State, OSHA, & EPA Regulations
- Customer Service
- Quality Products



Rainbow offers a complete line of chemicals and safety equipment for the telecom industry:

*Insecticides • Herbicides • Cleaners • Adhesives • Sealants • Lubricants • Paints • OSP Safety
First Aid • Spill Kits • Fiber Optic Cleaning • Desiccants • Fall Protection • Gas Monitors
Respiratory, Hearing, & Eye Protection • Work Area Protection • Tools & Hardware*

800.637.6047 • www.rainbowtech.net



RAINBOW



wide designer, manufacturer, and supplier of high-quality cable anchoring and control hardware systems, fiber optic and copper splice closures, and high-speed cross-connect devices. PLP offers innovative product solutions, such as the COYOTE® family of fiber optic splice closures, organizers, and trays.



Prysmian Group

BOOTH 143

4 Tesseneer Dr,
Highland Heights, KY 41076
Tel: 859.572.8000

Web: na.prysmiangroup.com

CATEGORIES: FTTX, IOT/M2M, LEGACY/
COPPER, POWER/SUSTAINABILITY,
WIRELESS/5G

Prysmian Group North America is the leading company in the design, manufacture and sales of wire and cable products, serving the most comprehensive range of markets including power transmission and distribution, telecommunications, construction and infrastructure, energy projects and specialty industries for countless applications in the United States and Canada.



Visit our listing and latest
video at www.iseexpo.com



WEDNESDAY, SEPTEMBER 1

11:30 AM – 6:00 PM: Exhibit Floor Open

THURSDAY, SEPTEMBER 2

11:30 AM – 3:00 PM: Exhibit Floor Open



Quanta Services

BOOTH 508

2800 Post Oak Blvd, Ste 2600,
Houston, TX 77056
Tel: 713.629.7600

Web: quantaservices.com

CATEGORIES: FTTX, I&M, POWER/SUSTAIN-
ABILITY, SAFETY, WIRELESS/5G, MISC.

Quanta Services is the leading specialty contractor with the largest and highly trained skilled workforce in North America – providing fully integrated infrastructure solutions for the electric power, underground utility, and communications industries. The company's geographic footprint spans North America and Australia, and its network of companies ensures world-class execution with local delivery.



Visit our listing and latest
video at www.iseexpo.com



Quest Controls
Intelligent Solutions. Controlled.

Quest Controls

BOOTH 309

208 9th St Dr West, Palmetto, FL 34221
Tel: 941.729.4799

Web: questcontrols.com

CATEGORIES: C&E, FTTX, LEGACY/COPPER,
POWER/SUSTAINABILITY, TESTING, WIRELESS/5G

Quest Controls' unparalleled hardware and software solutions are designed for today's telecom providers. Our remote monitoring presents alarms and monitored data, predicts savings opportunities, pending failures and anomalies that are otherwise impossible to observe on a site-by-site basis. Catastrophic events are effectively mitigated through Quest's ability to remotely manage customer facilities.



RAINBOW TECHNOLOGY
Specialists in Utility Chemicals & Safety Items

Rainbow Technology

BOOTH 500

261 Cahaba Valley Pkwy, Pelham, AL 35124
Tel: 800.637.6047
Web: rainbowtech.net

CATEGORIES: SAFETY, WIRELESS/5G, MISC.
We market specialty products and services to the utility and industrial markets, nationally and internationally. We are an important vendor to the telecommunications, electric power, other key utilities, OEM's, contractors, and distributors to these markets. We seek niche products and services while continuing to focus on traditional products. We sell through online stores as well as through traditional methods.

Reel EZ Industries LLC

BOOTH 539

5231 NE Antioch Rd, Ste 327,
Kansas City, MO 64119
Tel: 918.271.0717

Web: Reeleztrailers.com

CATEGORIES: SAFETY, WIRELESS/5G, MISC.

The Reel-EZ Trailer is one of the most innovative products of the year. Engineered with production and savings in mind, our patented Cable Reel Trailer is the only trailer on the market that can load and unload a cable reel using only the tow vehicle. This trailer is maintenance free vs. hydraulic or electric style trailers. One person operation makes it the safest reel trailer in production.

Render

Render Networks

BOOTH 540

745 Shea Center Dr, 4th Flr,
Highlands Ranch, CO 80129
Tel: 833.293.9013

Web: rendernetworks.com

CATEGORIES: FTTX, MAPPING/GIS,
WIRELESS/5G

Render's geospatial construction platform has a unique task-based approach to deploying fiber and wireless networks. Render transforms network designs to sequenced tasks for construction teams enabling them to build based on optimal build scenarios. End-to-end digital data flows provide a single, real-time view of progress to all stakeholders, resulting in schedule efficiencies of up to 50%.



Visit our listing and latest
video at www.iseexpo.com

Rhino Marking & Protection Systems BOOTH 314

4200 W Old Shakopee Rd, Ste 103,
Bloomington, MN 55437
Tel: 952.703.7019

Web: rhinomarkers.com

CATEGORIES: C&E, FTTX, MISC.

For over 30 years, Rhino has been the premier source for your damage prevention marker needs. From above-ground markers to surface-oriented markers, we have a large array of innovative markers to help protect your buried or aerial plant from potential damage.

Ripley Tools

BOOTH 340

46 Nooks Hill Rd, Cromwell, CT 06238

Tel: 800.528.8665

Web: ripley-tools.com

CATEGORIES: FTTX, I&M, WIRELESS/5G

Ripley designs and manufactures a full line of wire and cable preparation tools under brands Miller, ODM, Cablematic, and UtilityTool. Founded and based in the US for 85 years and serving technicians and installers across a variety of global markets including CATV, telecommunications, electrical, wireless, fiber optic, and utility.

Rosenberger Site Solutions

Rosenberger Site Solutions

BOOTH 507

PO Box 4268, Lake Charles, LA 70606

Tel: 337.598.5250

Web: RosenbergerOnline.us

CATEGORIES: FTTX, LEGACY/COPPER, SAFETY, TESTING, WIRELESS/5G, MISC.

Rosenberger Site Solutions, LLC offers a fully developed system solution based on high-quality cables, connectors and assembly accessories for connection from the antenna down to the base station. Products include: Fiber-to-the-Tower, Small Cell Solutions, The Qube - Multiple Radio Shroud, Hybrid Cables, DAS Components, Coaxial Cables, Connectors, Jumper Assemblies, Installation Tools, and accessories.



Outdoor IRL Networking Event

Wednesday, September 1 | 6:00 PM – 7:00 PM

Adjacent to the beautiful and refreshing oasis of the Fort Worth Water Gardens.

SAFEGUARD

Safeguard Equipment

BOOTH 234

4442 W. Riverbend Ave.,

Post Falls, ID 83854

Tel: 208.773.9263

Web: safeguardequipment.com

CATEGORIES: SAFETY

Safeguard produces electrical safety equipment. Our flagship product line, Compass, is a non-contact voltage and current detector. It's always on, always aware, and right in front of the user so they know what's hot and what's not at a glance.



Visit our listing and latest video at www.iseexpo.com

Time is too valuable... choose Tii

Tii Fiber Distribution Hub Series, a cost-effective solution for project plans and budgets that can't afford long lead times.

- Arrives just in time to meet your deployment deadlines
- 96-864 customer fiber service drops
- Modular patch & splice cassettes for added flexibility
- Custom factory stub lengths available
- Pole, wall and pad mount options with pad skirts for extra slack storage



tii technologies

Customized FTTx solutions delivered faster than the traditional Industry average

888.844.4720 • www.tiitech.com

Visit us at ISE Expo 2021 • Booth # 344





SAM Companies

BOOTH 132

4801 Southwest Pkwy, Building Two,
Ste 100, Austin, TX 78735

Tel: 800.656.9525

Web: sam.biz

CATEGORIES: IOT/M2M, MAPPING/GIS,
WIRELESS/5G

SAM is the leading geospatial and construction services firm in the AEC industry. We are known for using the most innovative technology and advanced processes to deliver the highest quality field data and insights to infrastructure projects across the country.



Senko Advanced Components, Inc.

BOOTH 139

450 Donald Lynch Blvd, Marlboro, MA 01752
Tel: 508.481.9999

Web: senko.com

CATEGORIES: FTTX, TESTING, WIRELESS/5G
Since its founding in 1946, Senko has acted from a corporate philosophy of contributing to the development of the global industry through technology. Our corporate statement "A history of service. A future of innovation" is a declaration of our vow that the Senko brand will continue to meet the expectations of our customers.



Southwire Company, LLC

BOOTH 228

1 Southwire Dr, Carrollton, GA 30119
Tel: 770.832.4010

Web: Southwire.com

CATEGORIES: EDUCATION, LEGACY/COPPER, POWER/SUSTAINABILITY, SAFETY, TESTING, MISC.
Southwire Company, LLC's telecom power products are among the premier LSZH central office DC and AC power cables in the industry. Our TelcoFlex® cables are used to power all levels of telecom equipment and battery backup systems used in the central office, CATV head-end, data center, and cell tower equipment shelter environments.



STEGO, Inc.

BOOTH 338

95 Chastain Rd NW, Ste 200,
Kennesaw, GA 30144
Tel: 770.984.0858

Web: stego-usa.com

CATEGORIES: IOT/M2M, MISC.

Constant changes in daily temperatures, as well as extreme climatic conditions in particularly warm or cold regions, are a challenge for your electronic components. In over 35 years, STEGO products have been appreciated for their reliability, longevity, and simple innovation by customers worldwide. STEGO offers Thermal Management solutions to protect sensitive parts in enclosures and other installations.

STL

BOOTH 332

1320 Main St, Ste 300, Columbia, SC 29201
Tel: 803.876.1910

Web: stl.tech

CATEGORIES: FTTX, LEGACY/COPPER,
WIRELESS/5G

STL is an industry-leading integrator of digital networks. Our fully 5G ready digital network solutions help telcos, cloud companies, citizen networks, and large enterprises deliver enhanced experiences to their customers. STL provides integrated 5G ready end-to-end solutions ranging from wired to wireless, design to deployment, and connectivity to compute through core capabilities.

SUMEC WASIN

BOOTH 622

SUMEC Bldg, 198 Changjiang Rd,
Nanjing, Jiangsu 210000, China
Tel: 0086-25-84531799

Web: sumec-wasin.com

CATEGORIES: FTTX, LEGACY/COPPER,
POWER/SUSTAINABILITY

SUMEC WASIN is a subsidiary of SUMEC GROUP, which is a core member of the China National Machinery Industry Corporation, also known as SINOMACH, a key member of the world top 500 enterprise. We are Tier 1 in the domestic telecom industry and top supplier abroad. We offer all types of fiber optical cables, FTTX solution, onus, and products related to telecom. Electrical cables, OPGW, OPPC, ADSS, and low/medium voltage power cables powered by FURUKAWA.

Sumitomo Electric Lightwave

BOOTH 427

201 S Rogers Ln, Ste 100, Raleigh, NC 27610
Tel: 919.541.8100

Web: SumitomoElectricLightwave.com

CATEGORIES: EDUCATION, FTTX, WIRELESS/5G
Sumitomo Electric Lightwave (SEL) is a recognized leader in optical fiber technologies and solutions for data center, enterprise, and communication networks. Drawing from research and development from its parent company, Sumitomo Electric Industries, Sumitomo Electric Lightwave offers a variety of advanced products in ribbon technology, air-blown fiber, fusion splicing, and connectivity solutions.



Superior Essex Communications

BOOTH 532

5770 Powers Ferry Rd, NW, Ste 300,
Atlanta, GA 30327
Tel: 404.502.1249

Web: superioressexcommunications.com

CATEGORIES: FTTX, POWER/SUSTAINABILITY,
WIRELESS/5G

Superior Essex is the world's largest producer of outside plant copper communications wires, and as a company operating at the forefront of emerging communications technologies for decades, we have long been aware of -- and prepared for -- the dawn of 5G connectivity with the OSP fiber and hybrid cables that enable it all.



Team Fenex

BOOTH 209

610 Illinois Ave, Sandoval, IL 62882
Tel: 800.883.3639

Web: teamfenex.com

CATEGORIES: I&M, LEGACY/COPPER, SAFETY
We are designers, manufacturers, and up-fitters of custom trailers and truck bodies used for fiber optic splicing, mobile power generators, confined space ventilation, heating, HVAC, water removal, high pressure tool air, low pressure dry air, traffic, safety, and security lighting.

Tellabs, Inc.**BOOTH 638**

4240 International Pkwy, Ste 105,
Carrollton, TX 75007

Tel: 972.588.7000

Web: tellabs.com

CATEGORIES: FTTX, LEGACY/COPPER

Tellabs' sole focus is to deliver simple, secure, stable, and scalable solutions to optimize network performance. Tellabs has delivered innovative access solutions in support of essential connectivity for over 3 decades. We have now expanded that leadership by defining a better way to build and operate modern networks. For more information, visit our website.

TesCom**BOOTH 140**

20200 Algreg St, Pflugerville, TX 78660

Tel: 800.888.1978

Web: tescomusa.com

CATEGORIES: I&M, TESTING, WIRELESS/5G

TesCom products include the world's smallest PTP clock, small, medium, and large packet/TDM hardened GNSS synchronization systems, 10GbE test sets (10/100/1000), Handheld Spectrum Analyzer/Frequency Selective Level Meter, Satellite/OTA meters, RF Noise Generators, RF

Signal Generators, Noise Power Ratio Test Sets, VDSL Test Sets, Patch Cable Kits, and ISO-Certified Repair/Cal all brands electrical and optical test equipment. Made in the USA.

**Thermal Edge, Inc.****BOOTH 538**

1800 Hurd Dr, Irving, TX 75038

Tel: 972.580.0200

Web: thermal-edge.com

CATEGORIES: C&E, IOT/M2M, LEGACY/COPPER, POWER/SUSTAINABILITY, WIRELESS/5G, MISC.

Thermal Edge manufactures temperature control solutions designed to solve the enclosure cooling challenges that your industrial application poses for your electrical control panels. All products are designed and tested to meet your strict requirements for quality and durability. Temperature control products include air conditioners, heat exchangers, and filtered fan packages.

**Tii Technologies, Inc.****BOOTH 344**

141 Rodeo Dr, Edgewood, NY 11717

Tel: 888.844.4720

Web: tiitech.com

CATEGORIES: FTTX, LEGACY/COPPER, WIRELESS/5G, MISC.

Tii Technologies, Inc. has been a leader for over 55 years in providing the communications industry with fiber and copper products supporting the ever-changing demands of today's broadband networks. Our vertically integrated global organization, combined with quick turnaround product development and manufacturing, allows Tii to offer a wide range of solutions ensuring quality performance, safety, and reliability.



Visit our listing and latest video at www.iseexpo.com



Phoenix Loss Control is an industry leader in outside plant damage cost recovery. With nearly two decades of experience, we have recovered hundreds of millions of dollars for our clients from third party damages to their cable, fiber, gas, and electric networks.

Contact us today to find out more!

PHOENIXLC.COM

1-888-PHXLOSS

**BOOTH 442**

2301 McGee St, Ste 100,
Kansas City, MO 64108
Tel: 816.534.3264

Web: trccompanies.com

CATEGORIES: FTTX, POWER/SUSTAINABILITY,
WIRELESS/5G

The TRC engineering team offers a full range of solutions and engineering design capabilities to support all types of communication projects. TRC is adept at providing planning, design, and project management for fiber optic, microwave, and wireless communication networks. TRC is committed to solving client challenges that make the earth a better place to live -- community by community and project by project.

U-TECK**BOOTH 722**

159 Rock Hill Rd, Fayetteville, NC 28312
Tel: 910.483.5016

Web: uteck.com

CATEGORIES: SAFETY, MISC.

U-TECK manufactures and supplies specialized products and services for the telecommunication, utility, municipal, and transportation industries. The central objective of U-TECK is the pursuit of excellence. We are dedicated to developing high-quality, innovative solutions that simplify everyday jobs in the field.



UCL Swift North America
(formerly America IIsintech)

BOOTH 510

3330 Earhart Dr, Ste 208,
Carrollton, TX 75006
Tel: 972.556.0916

Web: americailsintech.com

CATEGORIES: FTTX, TESTING

UCL Swift North America (formerly America IIsintech), a subsidiary of UCL Swift, is a nationwide provider of fiber optic components. With over 20 years of proven capabilities, their patented All-In-One functionality integrates thermal stripping, cleaving, cleaning, splicing, and protecting into a single unit; ensuring reliable connections and high precision splices.

United Poly Systems**BOOTH 720**

4707 E Kearney St, Springfield, MO 65803
Tel: 417.553.7001

Web: unitedpolysystems.com

CATEGORIES: FTTX, I&M, POWER/SUSTAINABILITY
United Poly Systems produces HDPE pipe products with diameters from ¾ inch to 26 inch IPS and 4 inch to 24 inch DIPS for use in a variety of markets. All products are manufactured in the United States at our facilities in Springfield, Missouri and Albuquerque, New Mexico.

Uticom Systems, Inc.**BOOTH 738**

109 Independence Way,
Coatesville, PA 19320

Tel: 610.857.2655

Web: uticom.net

CATEGORIES: SAFETY, MISC.

Uticom Systems, Inc. has assisted clients for over 30 years in developing and manufacturing hazard alerting and utility graphics standards, procedures, and products. Uticom's Compliance Monitoring Program reduces the potential for liability by implementing a process of assessing, updating, and monitoring a utility's catalog of graphics according to national standards including ANSI Z535, NESC, NFPA, and OSHA.

VeEX, Inc.**BOOTH 444**

2827 Lakeview Ct, Fremont, CA 94538
Tel: 510.651.0500

Web: veexinc.com

CATEGORIES: FTTX, TESTING, WIRELESS/5G
VeEX, Inc. develops innovative test and measurement solutions for next-generation telecommunication networks and services. Designed using vast technical expertise and employing the latest technologies, VeEX products address all stages of network deployment, maintenance, and field service verification across DSL, fiber optics, RF/DOCSIS, Ethernet transport, and associated synchronization applications.



Vertiv

BOOTH 226

1050 Dearborn Dr,
Columbus, OH 43085
Tel: 800.800.1280

Web: Vertiv.com/5G

CATEGORIES: FTTX, I&M, LEGACY/
COPPER, POWER/SUSTAINABILITY,
VIRTUALIZATION, WIRELESS/5G

Connectivity or use of data is built into the fabric of our society. It is vital to human progress. Vertiv believes there is a better way to meet this accelerating demand for data -- one driven by passion and innovation. We are Vertiv, and we offer a broad portfolio of efficient telecommunications, data center, edge, and network infrastructure solutions to power, support, and protect your network.



Visit our listing and latest
video at www.iseexpo.com



VETRO FiberMap

BOOTH 246

215 Commercial St, Portland, ME 04101
Tel: 617.894.7759

Web: vetrofibermap.com

CATEGORIES: FTTX, MAPPING/GIS,
VIRTUALIZATION

VETRO is a network asset management software company delivering unparalleled Internet infrastructure intelligence. We deliver the world's best map-based SaaS platform to plan, design, build, and operate the Internet infrastructure that enables a connected and sustainable world. At VETRO, we are passionate about delivering disruptive digital transformation for all communications service providers.

WEDNESDAY, SEPTEMBER 1

11:30 AM – 6:00 PM: Exhibit Floor Open

THURSDAY, SEPTEMBER 2

11:30 AM – 3:00 PM: Exhibit Floor Open



IN THE FIELD AND THE HEAT.

For a high-heat solution that delivers proven performance, turn to the battery major cell sites and datacenters are already using and trust for uninterrupted power—Deka Fahrenheit. Its exclusive Thermal Management Technology System™ is why it lasts 3x's longer in high temperatures. No other battery comes close.



Exclusive Thermal Management Technology System™

Perfected over five years, Deka Fahrenheit features groundbreaking innovations to deliver industry-leading performance:

Micro Catalyst
increases
recombination
and prevents
dry out

THT™ Plastic
optimizes internal
compression

TempX™ Alloy
inhibits corrosion
under the highest
temperature
extremes

Helios™ Additive
lowers float current
and corrosion

IPF® Technology
maximizes
capacity and
reliability

**Completely
Recyclable**
lead battery
technology to
reclaim lead,
acid and plastics



Lyon Station, PA 19536 P: 610-682-4231 www.dekabatteries.com





VIAVI Solutions

BOOTH 501

7047 E Greenway Pkwy, Ste 250,
Scottsdale, AZ 85254
Tel: 408.404.3600

Web: viavisolutions.com

CATEGORIES: FTTX, TESTING, WIRELESS/5G
VIAVI Solutions is a global provider of network test, monitoring, and assurance solutions for communications service providers, enterprises, network equipment manufacturers, government, and avionics. We help customers harness the power of instruments, automation, intelligence, and virtualization to command the network.

Vitruvi Software

BOOTH 343

700 - 140 10 Ave SE,
Calgary, AB T2G 0R1, Canada
Tel: 587.329.6197

Web: vitruvisoftware.com

CATEGORIES: FTTX, I&M, WIRELESS/5G
A GIS enabled, end-to-end telecom construction

software that drive efficiencies, increases data visibility, and reduces costs. Vitruvi redefines the precision of infrastructure wireless and wireline digital construction management (DCM) by seamlessly converting GIS designs into a web and mobile app-based construction management solution.

Voltaire Systems

BOOTH 634

2900 W Orange Ave, Ste 100,
Apopka, FL 32703
Tel: 407.840.1318

Web: voltairesys.com

CATEGORIES: C&E, WIRELESS, MISC.
Focusing on specific needs within the oil and gas, telecommunications, industrial and manufacturing controls industries, the team has developed a full line of heat exchangers, small air conditioners, industrial control panels, and pressurization units.



Walker and Associates

BOOTH 221

7129 Old Hwy 52, Welcome, NC 27374
Tel: 336.731.5270

Web: walkerfirst.com

CATEGORIES: FTTX, TESTING, VIRTUALIZATION
Walker and Associates is the premier distributor of telecommunications products for network operators, simplifying network deployments with expert installation, systems integration, and managed services. The products support technologies such as Switching, Routing, Wireless, NFV, Carrier Ethernet, VoIP, WDM, ROADM, Packet Optical Networking, SDN, Access Technologies, Active Ethernet, DSL, and more.

Werner Co.

BOOTH 706

555 Pierce Rd, Ste 300, Itasca, IL 60143
Tel: 888.523.3371

Web: wernerco.com

CATEGORIES: C&E, EDUCATION, SAFETY
Werner is a global manufacturer of ladders and

TerraTape
DIVISION OF REEF INDUSTRIES, INC.

UNDERGROUND MARKING TAPES

PROTECT IDENTIFY LOCATE BURIED UTILITIES

SCAN
TO LEARN
MORE



TERRATAPE.COM • 800.231.6074

access products, fall protection, Weather Guard truck and van equipment, and Knaack jobsite storage solutions (knaack.com, weatherguard.com).

Westek Electronics, Inc.

BOOTH 447

165 Westridge Dr, Watsonville, CA 95076

Tel: 800.526.2673

Web: westek.com

CATEGORIES: I&M, LEGACY/COPPER, TESTING

Westek manufactures products that will save time and improve efficiency for technicians in the high speed telecommunications world. Whether our innovative fiber workstation tools and accessories or the highest quality test/patch cables; our products offer ease of use and accurate results. Heavy duty, lightweight construction using state-of-the-art materials, Westek is the industry leader for over 30 years.



WL Plastics

BOOTH 434

3575 Lone Star Circle, Ste 400,

Fort Worth, TX 76177

Tel: 682.831.2700

Web: wlplastics.com

CATEGORIES: C&E, FTTX, I&M, MAPPING/GIS, WIRELESS/5G, MISC.

WL Plastics is the largest High Density Polyethylene (HDPE) pipe manufacturer in North America. With 8 state-of-the-art manufacturing facilities, experienced production personnel, and dedicated customer service, we are your ideal conduit pipe supplier for power and communications applications. Stop by BOOTH 434 for more info.



Wolf Line Construction

BOOTH 102

130 B Wing Hill Dr, Lexington, SC 29072

Tel: 803.395.8069

Web: wolflineconst.com

CATEGORIES: FTTX, POWER/SUSTAINABILITY

Wolf Line Construction is a licensed electrical construction company that specializes in fiber optic installation in the energized space on powerlines, including FTTX. We collaborate

with our customers to support field verification of design prints, aid in engineering/design, perform installation, and produce as-builts. Our industry knowledge, skills, and experience ensures our projects are a success.



Zyxel Communications, Inc.

BOOTH 529

1130 N Miller St, Anaheim, CA 92806

Tel: 714.632.0882

Web: zyxel.com/us

CATEGORIES: FTTX, IOT/M2M, WIRELESS/5G
Zyxel, a pioneer in IP technology for over 30 years, provides a complete portfolio of end-to-end business networking solutions. The first choice of many tier one service providers and small and medium-sized businesses, Zyxel offers its partners service-rich solutions backed by domestic logistical, sales, and technical support teams based in Anaheim, CA.



Global Supplier to OEMs and Service Providers for Passive Optical Devices – DWDM, CWDM, Splitters, MEMs Switching for FTTH, Metro Transport, Remote Fiber Testing, Data Center Infrastructure and Wireless Backhaul Applications

Family	Type	Application	Features
DWDM	<ul style="list-style-type: none"> • 50GHz • 100GHz • 200GHz 	<ul style="list-style-type: none"> • Long Haul • Add/Drops 	<ul style="list-style-type: none"> • Ultra Low Insertion Loss • Mini-Size Dimension
CWDM	<ul style="list-style-type: none"> • C+L Band • O Band • Dual Band 	<ul style="list-style-type: none"> • Metro Networks • Surveillance Networks • Enterprise Networks 	<ul style="list-style-type: none"> • Ultra Low Insertion Loss • Mini-Size Dimension
Splitters	<ul style="list-style-type: none"> • 1XN • 2XN 	<ul style="list-style-type: none"> • Access Networks • PON SYstems 	<ul style="list-style-type: none"> • Low Insertion • Excellent Uniformity • Compact Size



DWDM Modules



LGX WDM or Splitter Modules



Patchcords, Pigtailed, MPO, MTO Customized Patch Panels



CWDM Muxes

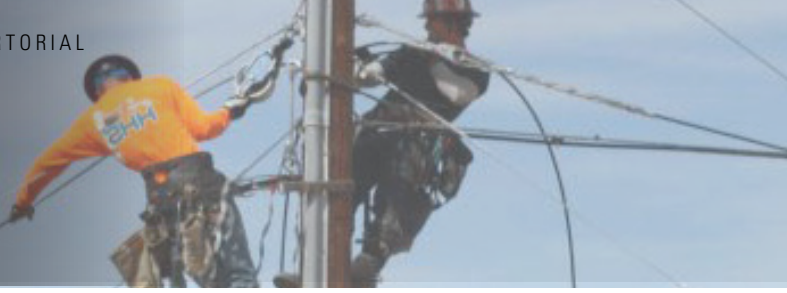


EDFAs

Custom OEM Design, Prototyping, Quick Turns and Availability. Contact us at Crowntech Photonics USA at sales@crowntechphotonics.com For Quote Requests and Order Inquiries

ISO Certified ISO9001 I/14001, GR-1221-CORE Compliant

100% RoHS 10 Compliant



The Turn-Key Solution for Broadband Network Infrastructure

How the landscape of a massively fragmented industry is changing for the better

In 2020, many consumers shifted their perspective on high-speed, broadband connection from a convenient feature of modern life to an absolute necessity. But this industry has long been experiencing the rising demand for fiber – and the design-build services required to make network expansion a reality.

The telecommunications industry is highly fragmented. Beside the big players, there are thousands of small contractors across the country that play a key part in building our nation's broadband infrastructure. This fragmentation creates significant cost and schedule risk for the end customer. Consolidating critical services into a single, turn-key platform is the solution to overcoming the downfalls of fragmentation. It is also the key to operating at scale. The future of our nation's broadband network requires operators who can execute projects from end to end.

End-To-End Capabilities

Few companies operating at scale can self-perform both engineering and construction services. Turn-key companies provide a diverse and comprehensive suite of capabilities under a unified platform. This structure produces seamless integration at every project phase and an aligned organizational vision. Collaboration and innovation are bred in organizations like these.

End-to-end service providers specialize in integrated project delivery – from concept through network go-live, which leads to faster returns on customer investment than the traditional design-bid-build method. Customers receive early-stage, accurate cost data, overall budget management and, ultimately, cost reductions because of this integrated model. National material buying power

also plays a role in controlling costs, an especially critical advantage in our current economic climate. Further operational risk is minimized by controlling scope and schedule as well as mitigating conflict between design and build entities.

Safety is another important consideration. For turn-key operators, a strong commitment to safety excellence spans across the unified project approach and is ingrained within the company culture as a core value. Best-in-class safety programs and management plans ensure the health of personnel and environmental compliance.

Technology & Data Innovation

Innovation is threaded through the DNA of the most successful turn-key companies. Due to vast expertise and resources residing under one roof, cutting-edge technology is fully embraced and the power to build proprietary software exists. This can include enhanced GIS capabilities or state-of-the-art back-office systems. Disparate data from business systems such as design, construction, finance, CRM and human resources are centralized in Congruex's exclusive cloud-based shared services platform. This single source of truth provides total transparency for key stakeholders, enabling data-driven, agile business decisions. These solutions maximize productivity, reduce operational cost and offset supply chain increases.

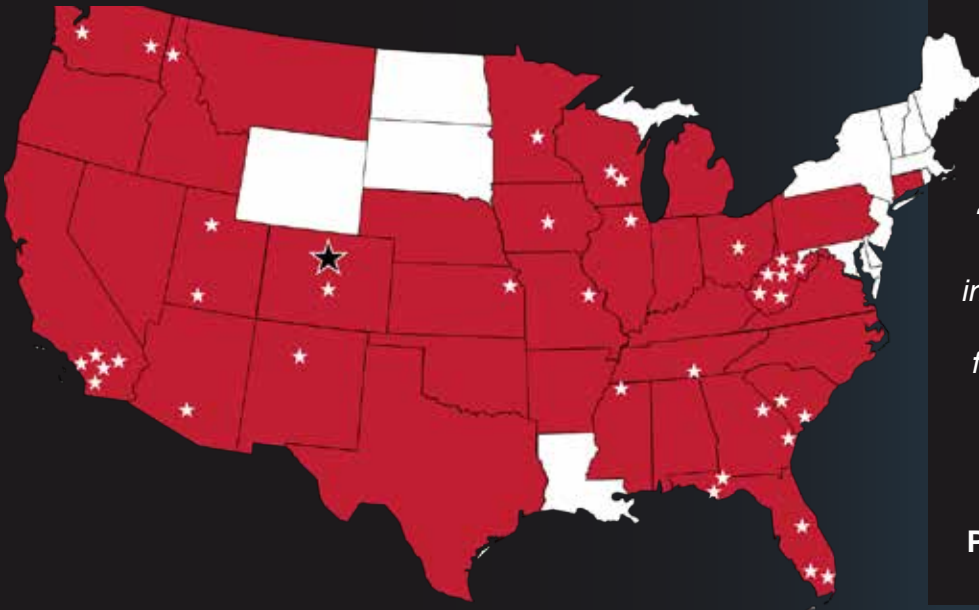


Michael White is Senior Vice President of Sales and Marketing for Congruex. For more information or to schedule a time to connect at the ISE Expo, email mwhite@congruex.com.

Networks Built Better.

Congruex is streamlining the way networks are built. We offer the full breadth of disciplines required for builds under a single umbrella.

Our Footprint



"We are seeing unprecedented demand that is only going to increase. Congruex continuously generates creative solutions for our customers of all sizes to deliver network build solutions across the US."

**- Bill Beans, Co-Founder,
President & CEO of Congruex**

Our Services



Network Design
& Engineering



Wireless
Connectivity Services



Aerial & Underground
Construction



Network Relocation

One organization. One Congruex.





Outdoor IRL Networking Event

Wednesday, September 1

6:00 PM – 7:00 PM

Catch up with your peers and share experiences from the day's events in a relaxed environment where you can join your colleagues and mingle with new friends, as well as meet exhibitors and ICT Visionaries. Enjoy this Outdoor "In Real Life" (IRL) Networking Event, which includes beverages and appetizers.

SPONSORED BY:



Education Expert

Gain knowledge and get a chance to win \$250!

We're giving away a \$250 American Express gift card to one lucky education attendee each day during the Opening Keynote and Tech Talks.

Attend to Win – Here's How it Works:

1. As you EXIT each seminar/workshop you attend on August 31 – September 2, you'll scan an Education Expert QR Code. The more sessions you attend, the greater your odds of winning.
2. During the Opening Keynote on Wednesday, September 1, and Tech Talks on Thursday, September 2, we will randomly select the winner through the mobile app and present the winner with a \$250 American Express gift card at that time. *Must be present to win.*



Attendee Booth Tracker

This is a complimentary tool created just for attendees to help leverage their show experience. Keeping track of the companies you visit at an event can be challenging. Our attendee booth tracker will help you

by organizing a list of all booths that scanned your badge at the show. Our portal will provide a detailed listing of companies and their websites. In addition, this list can be downloaded to store offline.

FEATURES:

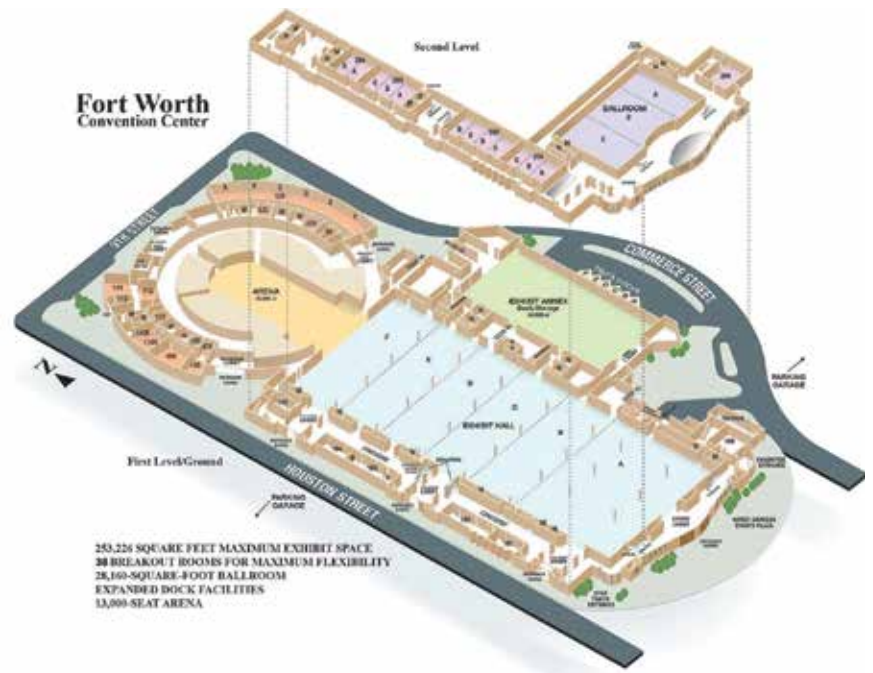
- A personalized URL is created for each attendee scanned by at least one booth on the exhibit floor, landing them on a personalized listing of the booths they visited at the event.
- Portal listing to include company details and company website.
- Sort listing or download the file to store offline.
- Save listing to favorites.

More information about how to gain access to your Attendee Booth Tracker will be emailed to you after ISE EXPO 2021.



ISE EXPO 2021 will be taking place at the Fort Worth Convention Center with the goal of prioritizing the health and safety of our attendees, vendors, sponsors, staff, and other stakeholders.

Read more about our COVID-19 Safety Guidelines at www.iseexpo.com.



First Aid and Emergency Medical Technician (EMT) will be at the front of the ISE EXPO exhibit hall.

Lost and Found will be located at the ISE EXPO registration counter.

viewPro Series

Next Generation of Smart IOT Fusion Splicer



Active V-Grove
Core / Clad Alignment



Motorized Clamp
Improved accuracy

Ribbon Splicer



view12R Pro



520 X Magnification
User-friendly
intuitive GUI

Clad Alignment

Core Alignment



view3 Pro

Fastest Splicing Time

Up to 6 sec
Quick mode



view5 Pro



view8 Pro



JOB & WORK
MANAGEMENT



DEVICE
MANAGEMENT



REAL-TIME
TRACKING



REPORT & DATA
MANAGEMENT



www.innoinstrument.com



You dream,
we DESIGN

Exhibit Hall Floor Map

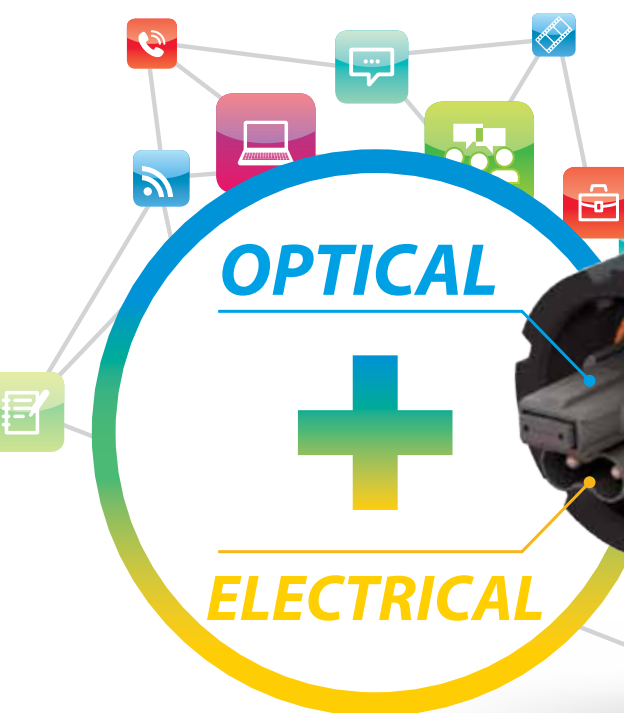


SENKO®
Advanced Components

IP-ONE™

Optical 'N' Electrical
Power/Fiber combined

**Visit our
booth #139
at ISE EXPO**



**Small Cells, Macro Cell,
Broadcast, Security**

Powering 5G Wireless Network

IP-68 Rated Connector



**Reduce
installation
time**



**Indoor/
outdoor
applications**



**Space
Saving**



**Cost
effective**

Senko introduces its new IP-ONE hybrid connector, combining Power & Fiber in ONE, specifically designed to meet the demands of the Communications Market.

SENKO's IP-ONE is a cost effective hybrid connector designed for harsh environmental applications, providing power and optical connectivity together to any remote equipment (various power grade). SENKO IP-ONE reduces material cost, simplifies installation and has found applications in Front-haul, Backhaul, DAS and FTTX deployments. It's the connector of choice anywhere that requires both power and fiber remotely.

SENKO ADVANCED COMPONENTS, INC.

America

USA EAST +1-508-481-9999
USA WEST +1-858-623-3300
TEXAS (972) 441-4114
Sales-Americas@senko.com

South America

BRAZIL +55-21-3736-7065
Sales-Brazil@senko.com

Asia

HONG KONG +852-21210 516
SHANGHAI +86-21 5830 4513
SHENZHEN +86 755 2533 4893
Sales-Asia@senko.com

Europe

UK +44 (0)1256 700880
ITALY +39 011 8399828
POLAND +48 71 345-90-05
Sales-Europe@senko.com

Asia Pacific

AUSTRALIA +61 (0) 3 9755 7922
Sales-Asia-Pacific@senko.com

Japan

TOKYO +81 (0) 3 5825-0911
Sales-Japan@senko.com

CALL 1-888-32-SENKO

www.senko.com

Thank You to Our 2021 Sponsors

Mobile App



Premier Partner Program



Exclusive Education Sponsor



IRL Networking Event



Lanyards



Conference Bags



Demo Zone



ISE Executive Roundtable

Thank you to the participants on this invitation-only, closed-door event bringing leading vendors together for a compelling, content-rich day of networking, discussion, and problem-solving.



ISE'S Inaugural Contractors' Forum

Thank you to the participants of this unique, closed-door event. Invited contractors will explore topics that help them create and execute successful business models.

Mapping



ISE EXPO Mobile App

Get the most of your show experience when you download the official ISE EXPO Mobile App on your smartphone (iOS and Android), tablet or laptop. Search exhibitors, sessions and speakers, get notifications and show highlights, watch product videos and more. Use In-App messaging to directly connect with attendees and exhibitors one-on-one.

SPONSORED BY



Call for Presentations 2022

Share Your Network Know-How

Be a respected seminar presenter at ISE EXPO 2022 in the mile-high city of Denver, Colorado.

Submit Your Presentation Proposal for 2022.

Visit www.iseexpo.com/cfp



VISIT BOOTH 142

Attendees
will see a
fiber splicing

trailer used to install, splice, and repair fiber optic cable. They will also see different types of fiber cables and the different sizes. Fiber technicians, along with the NTDPC, will have examples of damaged fiber cables for view. There will be fiber splicers on-site to provide a hands-on demonstration of how to splice fiber. The fiber splicers and NTDPC members will be available to answer any questions attendees may have regarding telecom underground fiber infrastructure and restoration.



SAVE THE DATE

ISE EXPO

ICT SOLUTIONS & EDUCATION

Education: August 23 – August 25

Exhibits: August 24 – August 25

Colorado Convention Center

Denver, Colorado, USA

2022

www.iseexpo.com

Post-Show Bonus Education

All registered attendees to ISE EXPO 2021 will have access to post-show, on-demand educational seminars. Visit www.iseexpo.com for more information.

Track 1: Construction & Engineering / Network Transformation / Networks as a Service (NaaS) / CapEx & OpEx Optimization

Troubleshoot and Repair of Modern Dissimilar Fiber Networks

SEMINAR LEVEL: ADVANCED

Presented by Lucas Mays, Product Manager, AFL



Mass fusion splicing is well established and has been used in telecommunications networks for three decades, traditionally

limited to splicing of G.652 ribbons together. Recently, mass fusion splicing of dissimilar fiber ribbons has become more common. In this seminar, we will explore the unique features splicing these various fiber combinations brings as it pertains to mass fusion splicing and network testing and troubleshooting.

Top 3 Reasons You Should Transform Your Network

SEMINAR LEVEL: INTERMEDIATE

Presented by Teresa McGaughey, AVP, Access and Field Marketing, Calix



The network you have is working just fine, and as the old adage goes, "don't fix what isn't broken" so why should you transform

your network? This seminar will explore the top 3 reasons why it's time to think about your access network differently. We will explore the reasons to transform the network, the options for transformation, and the benefits that can be gained.

CapEx Reporting... Where the \$#@ is My Data?

SEMINAR LEVEL: INTERMEDIATE

Presented by Bryan McIver, CTO, Cogeco



Learn about the considerations to provide reporting within 0.001% accuracy and to structure operations to get this data from

internal and contractor communities in a timely and predictable manner.

Strategic Financial Leadership

SEMINAR LEVEL: BASIC

Presented by Steve Coughran, Founder, Coltivar



The business environment is changing. Winning construction companies realize that equipping employees with the tools

and skills of tomorrow is critical to developing future leaders.



Getting it Right the First Time – Strategies to Maximize OSP Inspections

SEMINAR LEVEL: BASIC

Presented by Ron Bilodeau, Director Strategic Solutions, Osmose Utilities Services, Inc.



Billions of dollars in federal funding and regulatory requirements are accelerating the deployment of fiber optic networks

throughout rural America. Much of the broadband networks will be deployed on utility poles and municipal streetlights. This seminar will discuss data collection methodologies such as LiDAR, UAV and Digital Measurement that apply technology to accurately collect and analyze data and will identify solutions to ensure the best management and use of data to maximize each visit to a pole, conduit, or right of way.

Track 2: Access Networks Evolution / OSP Advances / Network Visibility / FTTx / Wi-Fi

The Constantly Evolving Fiber Density Landscape

SEMINAR LEVEL: INTERMEDIATE

Presented by Mark Boxer, Technical Manager, Solutions and Applications Engineering, OFS



Today's networks continue to require more fiber in less space. Network traffic continues to converge onto a single cable, often requiring

many more fibers than previous generations. Innovation in the area of fiber density continues at a very brisk pace. At the same time, splicing innovation has been needed to enable efficient splicing of new fiber sizes and cable structures. This seminar will bring attendees up to speed on the latest advances in fiber density in cables and splicing capabilities.

Documentation Debt and How to Eliminate it With Fiber Management Software

SEMINAR LEVEL: BASIC

Presented by Will Mitchell, CEO and Co-Founder, VETRO Fibermap



It's impossible to manage your fiber network assets if you don't know what assets you have. Eliminating documentation debt

before interest comes due as business grows is complex, assets are unaccounted for, and expansion is hindered by lack of reliable data, is crucial. This seminar discusses selecting a fiber management software that can assume the burden of documentation, maintaining a complete inventory of assets and data, and making that data accessible to everyone in the business through an easy-to-use, cloud-based platform that updates in real time.

Track 3: 5G-6G Infrastructure/FWA/ Small Cells/RAN Progression

Private LTE Network to Enable Enterprise Digital Transformation

SEMINAR LEVEL: INTERMEDIATE

Presented by Prasad Bhandaru, Program Manager, Cyient



This seminar will explain the term "documentation debt and how network owners and operators can leverage fiber

management software to digitize their fiber optic networks for better visibility and data-driven insights.

Designing a Hybrid Maintenance Strategy

SEMINAR LEVEL: INTERMEDIATE

Presented by Jim Smith, Vice President of Sales & Marketing, Tempest Telecom Solutions



Today, network operators and technology leaders are continually facing decisions around maintaining existing and legacy

networks, while upgrading equipment as they look towards 5G. This seminar discusses deploying a hybrid strategy that combines secondary hardware, managed spares, third party maintenance and services is proven to deliver significant benefits including savings, eliminate post maintenance increases, and the ability to extend the life of legacy network equipment.

5G - Ushering in the Next New Frontier of Wireless Communications

SEMINAR LEVEL: BASIC

Presented by Patrick Moreno, Product Marketing Manager, Zyxel Communications



The passing of the digital baton is upon us, we are on the cusp of a new generation of wireless communications. There is a lot of anticipation centered around the release of 5G with the promise of increased data rates, more coverage, and lower latency. This seminar explores what kind of an impact will 5G make in the future for connectivity between Communications Service Providers and their subscribers? There is a clear and defined path for migration from 4G LTE to 5G. How will this transition change the way we provide broadband access?

Track 4: Network Monitoring & Reliability/Powering/GIS/Cybersecurity/Safety

Broadband as an Essential Service Requires a Service-Oriented Approach

SEMINAR LEVEL: BASIC

Presented by Jeff Boozer, Director - Utility & Municipal Sector, ETI Software Solutions



Service-oriented broadband operations is a transformation of the broadband service provider operational dynamic -- expanding

the subscriber centric model to include real-time service data as the key to providing exceptional customer experience. In this seminar, we will present how leading service providers have: modified operations and support to align with customer expectations; challenged traditional network designs; and restructured internal operations to treat broadband as an essential service.

OK, Smart Glass, You Take It From Here

SEMINAR LEVEL: BASIC

Presented by Ed Jack, Director of Business Development - EKO, GoFoton, Inc.



You can't virtualize the actual fiber, cables, and connectors any more than you can virtualize the tires on an automobile. But,

as with tires, by introducing targeted arrays of sensors and feeding the data they gather to management software, you gain real-time mastery over the physical network and every component in it. This seminar discusses a comprehensive re-imagining of the network's physical architecture with this non-negotiable requirement: total fiber visibility at the construction level of both inside and outside plants, supported by out-of-band telemetry and real-time reporting and notification, all enhanced by data-driven predictive learning.

ISE EXPO Hotels



Omni Fort Worth Hotel

1300 Houston Street, Fort Worth, TX 76102

Tel: 817.535.6664

www.omnihotels.com/hotels/fort-worth



Hilton Fort Worth

815 Main Street, Fort Worth, TX 76102

Tel: 817.870.2100

www.hilton.com/en/hotels/ftwfwfhf-hilton-fort-worth



Sheraton Fort Worth Downtown

1701 Commerce Street, Fort Worth, TX 76102

Tel: 817.335.7000

www.marriott.com/hotels/travel/dfwds-sheraton-fort-worth-downtown-hotel/

Enjoy the highlights of downtown Fort Worth just outside your hotel room.

- Relax in the popular Sundance Square Plaza under the enormous umbrellas, grab a bite to eat on a patio or take a selfie near the whimsical water fountains.
- Located in a restored 19th-century building in Sundance Square, the Sid Richardson is a free museum that showcases the art of the American West.
- Explore the gorgeous Fort Worth Water Gardens, a refreshing urban oasis next to the Fort Worth Convention Center.
- Visit the JFK Tribute in General Worth Square, which honors President Kennedy's historic stay in Fort Worth.
- Hop aboard Molly the Trolley, a bus service that circulates between downtown hotels and hot spots.

Visit www.fortworth.com for detailed information on local attractions and special events. Also, dine in Fort Worth's restaurants offering everything from Tex-Mex and BBQ to world-class cuisine.

Thank you to the following industry partners for their support of **ISE EXPO 2021.**



Media Partner



Questions/Contact Info

For more information, visit www.iseexpo.com.

For questions, contact info@iseexpo.com.

**REGISTER BEFORE
AUGUST 31 TO SAVE ON
REGISTRATION FEES!**

WWW.ISEEXPO.COM

See You in Denver

A night-time photograph of the Denver skyline, featuring several illuminated skyscrapers against a dark blue sky. The city lights are reflected in the foreground, which appears to be a body of water or a wet surface.

ISE EXPO

ICT SOLUTIONS & EDUCATION

Education: August 23 – August 25

Exhibits: August 24 – August 25

Colorado Convention Center

Denver, Colorado, USA

2022

www.iseexpo.com